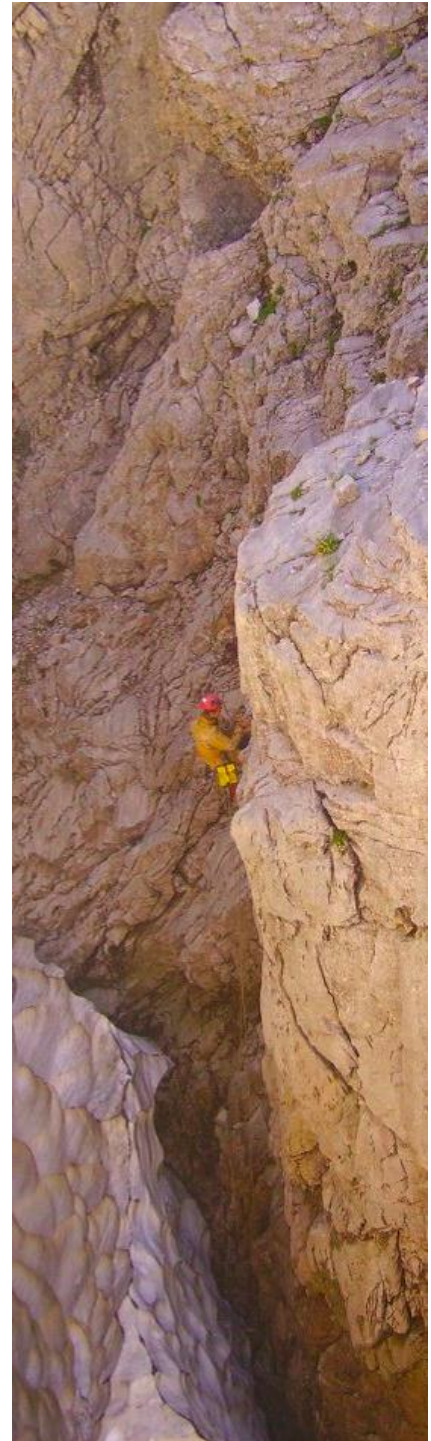
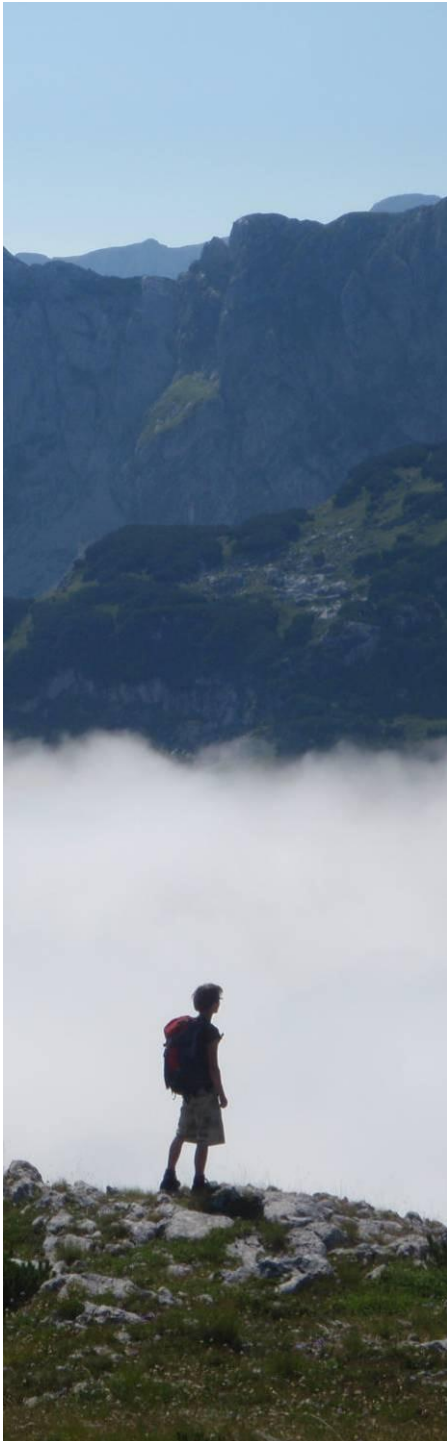




York University Cave & Pothole Club

Durmitor 2011 Expedition Report



Toby Buxton, Mark Sims and Steve Gilbert



York University Cave and Pothole Club Durmitor 2011 Expedition

Contents

Introduction	3
Aims	5
National Park Permissions	5
ASAK	5
Travel	6
UK - Belgrade.....	6
Belgrade - Zabljak.....	6
Zabljak - Camp.....	6
Luton - York	7
Food	7
Water.....	8
Camping.....	9
Limits of Prospecting	11
Donja Alisinica	14
Kobilji Do.....	14
Teleci Do	14
Gornja Alisnica	14
Caves	15
Used all our gear - needs a return trip:	15
Worth a return:	17
Possibly worth a return:.....	17
Rubbish:	18
Tips (for a flawless Durmitor expedition).....	18
Weather Summary	20
Expedition Diary.....	23
Conclusions.....	32
Appendix: Prospecting Data	34



York University Cave and Pothole Club Durmitor 2011 Expedition

Introduction

Durmitor: A mountain range with more holes than a swiss cheese. A few go along way down, but most share the same destination - nowhere. In 2010 we had confirmed that our favoured area for the last three trips (2004, 2007, 2010) had run out of the former type. There were discussions of expos/recces to Romania and Crete. Steve suggested a small return trip to Durmitor to join ASAK (The Belgrade University Caving Club) at "old camp" to work with them to help finish up their (rather hard core!) projects. With ASAK having other expos on the go, it looked likely that this might be the last expo to the massif. Looking at maps, there were areas that only a handful from YUCPC had seen from a distance and there was no indication they had been prospected. Curiosity and optimism motivated a plan to recce the mysterious area north of Bobatov Kuk (Durmitor's highest peak) in preparation for a follow-up expo. Plan A was born. Camp with ASAK for the 1st week, then recce the new area in the 2nd week. Shortly before the expo, we learned that changes outside of anyones control meant we would arrive on the mountain the day ASAK depart. Plan B - recce for 2 weeks. With hindsight, this might have turned out to be a blessing in disguise.

There is a reason why the area north of Bobatov Kuk had not been looked at before. It is almost certainly the most remote part of the mountains, so we decided early on, especially with only three of us, that we had to go 'lightweight'. I have very distinct memories of trudging up a steep path, 30 kilos on my back and a couple more on my front, thinking 'this is f***ing lightweight is it?!', but we had certainly tried. We had a single stove, minimal rigging gear, and a miserly 40m of 9mm rope. I hadn't brought any trousers, waterproof or not. Steve's SRT kit was mainly slings and tiny bits of metal which may or may not have worked as jammers. Mark had even left a fleece at the bottom of the hill (unintentionally, but perhaps subconsciously trying to save on weight?). All our wellies and undersuits had been left in the UK. There was no room for comfort, luxuries, and even less for anything to go wrong.

With a man power of three, tiny amounts of rope and only uninformed guess work on water, camp sites and possible good prospecting, what could we hope to find? Were we doomed to failure, death from dehydration and cold feet? Or might we manage to overcome the natural obstacles in the area and find something worth coming back to in 2012? Read on, and find out.

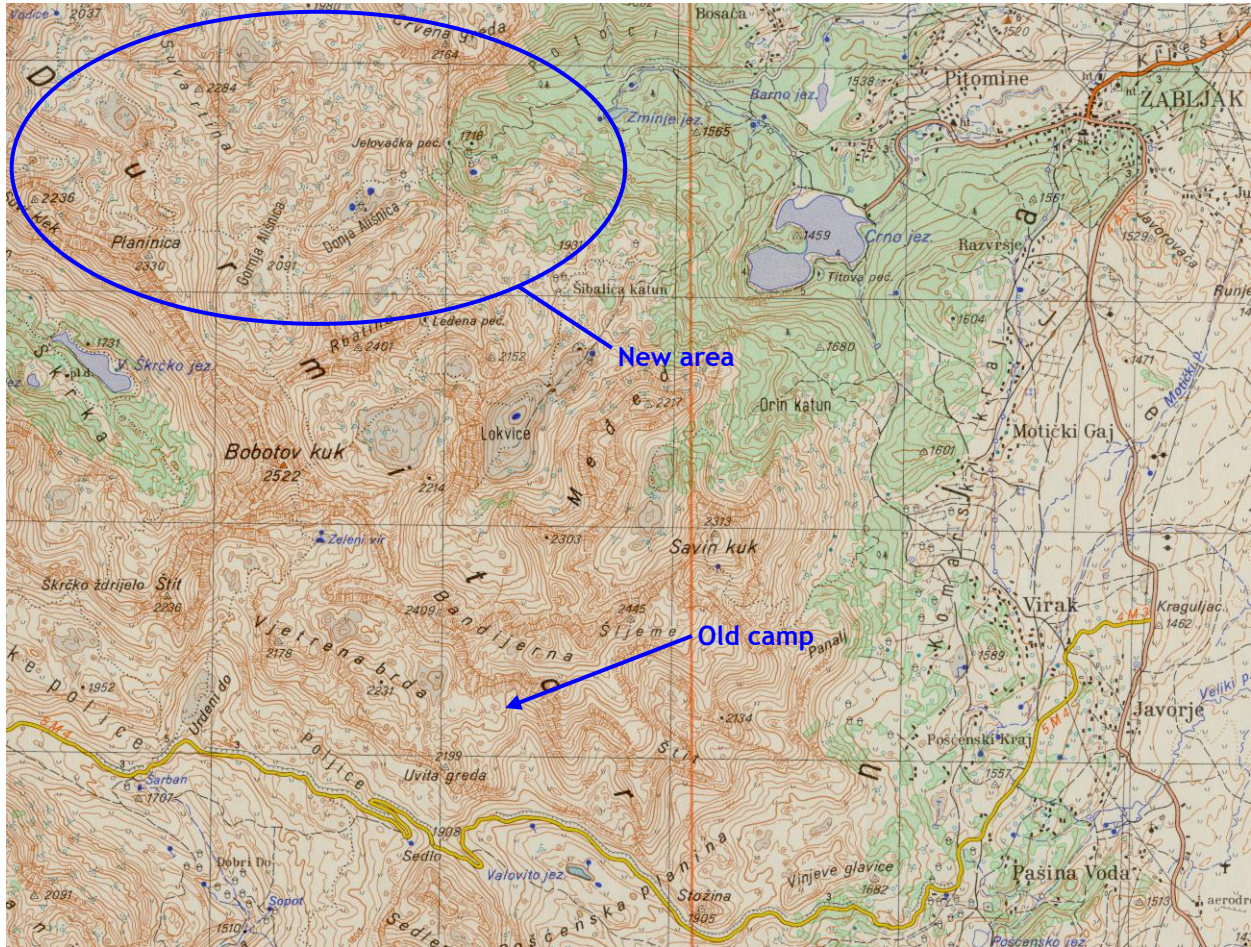


Three men on a mountain: A slightly smaller expo team than in previous years!

Left to right: Mark Sims, Toby Buxton and Steve Gilbert



York University Cave and Pothole Club Durmitor 2011 Expedition



Hopefully this report will not only give an account of where we went, what we found and how we survived, but also be something to base any future visits on.

For some more information about the caves and previous trips to Durmitor, there's some in the previous YUCPC reports (<http://www.yucpc.org.uk/expeditions/>) and more on the ASAK website (http://www.asak.org.rs/index_e.php).

For any locations mentioned in the report, the relevant maps and GPS data points can be found in the Google Earth KMZ file, also available on the YUCPC website.

Our thanks to ASAK for sorting out permissions for the national park and answering our questions, especially those about the area.



York University Cave and Pothole Club Durmitor 2011 Expedition

Aims

In 2004, 2007 and 2010 the YUCPC expo to Durmitor had been based at the international camp near Sedlo in the South of the massif. In 2010 it had become clear that this area had been done somewhat to death, with our team only finding a few (if often interesting and novel) caves. In addition, the commute to prospecting areas was getting ridiculous! It was therefore clear that we had to find somewhere else to go.

The area we chose was basically found by looking at a map and crossing out bits that had been looked at by us or other teams. Very little information was available on the area, meaning that the expo in 2011 really had a main priority of determining whether the area was viable. More specifically:

- Was there anywhere to camp? Durmitor has an incredible dearth of flat ground, even enough for a small tent
- Was there any water? The map showed several small pools and a spring, but would the water from these be drinkable or would they even exist?
- Recent expos all had a relatively short walk in. Was it possible to run such a remote expo?
- And last, but not exactly least, was there any possibility of finding caves?

If the answer to all these questions was yes, then the club could come back in 2012 for a proper expo. Our trip in 2011 was more of a 'recce' than an attempt to find anything, and it is on the strength of this that we hoped it would be judged. With such minimal caving gear, we weren't expecting to find anything to shout about!

National Park Permissions

ASAK were invaluable in securing us permission to camp in the national park. The park authorities were given our names and we had a letter confirming the permission. Mrs Vanja Sarovic (pronounced: Vanya Sharovich) is a good friend of the ASAK, so this was apparently straightforward.

ASAK

Their stay was divided in two parts. The first 10 days in the high camp on Suvi Tavani, 6 of which were rainy... Snow levels were low and water levels very high, due to a lot of rain. They didn't finish the work in Obrucine because of the tricky morphology requiring enormous quantities of equipment ("countless small verticals"). They ran out of equipment and also arrived at a "river" at -250 m, so it wasn't possible to continue. Despite this, it was very useful for the new ASAK members and they gained a lot of experience. For the second part of their stay (the last 5-6 days) the camp was moved to the village of Virak (and is still there), next to the cabin of one of their members. From there, it was easier to work on the eastern slopes of Savin Kuk and Sljeme. 6 people had to leave earlier, leaving Voja and 6 newcomers in the vicinity of Virak.



York University Cave and Pothole Club Durmitor 2011 Expedition

Travel

UK - Belgrade

Flying into Belgrade and then catching the overnight bus to Zabljak is fairly easy and cost effective. In 2010 this was found to be a good route. This route was copied by Steve on this recce, but on finding cheap flights, minimal effort was put into finding new alternatives (i.e. new cheap flights starting up to more convenient locations). Steve's flight was with JAT Airways from Heathrow. Booked three months in advance it was £130. The return flights were with WizzAir from Belgrade to Luton and were £110 booked 4 months in advance.

Mark and Toby were arriving into Belgrade by train since they were coming straight from France. This was found to be the optimal for their circumstances, but still convoluted and time consuming.

Steve was greeted by Peca and Jelena at Belgrade airport and given a lift to meet Mark and Toby and the train station. Alternatives would have been a bus transfer or an expensive (30 Euro) taxi. Mark and Toby had arrived a little earlier and had just enough time to book the return bus tickets to Zabljak. Amazing timing! Peca and Jelena treated us to a meal and showed us the sights before giving us a lift to catch the bus.

Belgrade - Zabljak

The Belgrade to Zabljak bus was bought in Deinar and cost the equivalent of 30 Euros each for an open return. The Lasta overnight bus leaves at 23:30 from Belgrade and returns at 14:00 (<http://www.lasta.rs/>).

The return is an open ticket, so it's advisable to book in advance. We tried, but found the ticket office was closed on Sunday afternoon when we went shopping. On the day of travel, we (and a few others) expected the ticket office to be open at 8, but it didn't open until 9:00. For small groups, it is *probably* okay to book first thing on the morning of travel, which is what we did. If the bus had been booked up, there is a bus run by a different company to Belgrade at 11:00 that might have had space, although we'd have had to buy a single ticket. We "slept" on the floor at the airport before our early flight on Sunday.

Zabljak - Camp

From Zabljak, it was easy to flag down a taxi at the central cross-roads. The road is paved until the track off to Bosaca. We were charged 7 Euros for this first trip and only 5 Euros after the shopping trip. On this second trip, the taxi driver didn't quite know the way. This was not helped by the walking maps inaccurate representation of a junction part way; it's worth keeping an eye on the map (and a compass) on the journey!



York University Cave and Pothole Club Durmitor 2011 Expedition



Comparison of the walk to the old camp (red) and to the new camp (blue)

A taxi will take you to where the road ends about a kilometre away from Zminje Jezero (Snake Lake). From here to the bottom of the path is about another kilometre. For a larger expedition, it *might* be worth getting a 4x4 to drive baggage/people all the way to the bottom of the mountain, saving 2 km of walking (on flat ground).

The walk involves a gain in altitude of about 550 m over about 4 miles. The effect of the altitude is noticeable, although not enough for altitude sickness to be a concern. The walk up to camp in previous years was about 1 mile and the altitude gain was 200 m. It might not sound far, but with 30+ kg of kit it was a strenuous 5 hours! The shopping trip mid expo was 3 hours down and 3 hours return.

If camp had been located near the Vodice spring (SE of Vidrika 2037), it would be a much shorter walk in from Ograde Kolibe to the North. Asking at the tourist information centre about the quality of the road, it quickly became clear they were keen on selling a 35 euro 4x4 ride on a sightseeing trip around Durmitor. It wasn't clear, but we believe the road is fully paved to Ograde Kolibe and only requires a 4x4 for the section through the Tara canyon. We were quoted 25 Euros to go just to the village.

Luton - York

Back in the UK, trains from Luton to York were over £100 each. It was cheaper to get a hire car at about £130 including damage waiver.

Food

The normal recommendation for expo calorific intake is 3000 to 3500 kcal per day. Immediately before the start of the expedition, it was found that Toby and Mark could bring left over food from the preceding Berger expo in France. This meant that it wasn't practical to easily plan much in advance. In the UK, Steve had already bought a supply of bean-feast, flavourings, powdered milk and smash, i.e. light weight food that is not easily available in Zabljak.

We put a rough shopping list together based on the plan that we'd only come off the mountain after a week. Pasta was readily available, but we couldn't find cous-cous.

It was very fortunate that the spare Berger food included pre-made up bags of muesli including milk powder. Practical food for breakfast wasn't readily available in Zabljak. For



York University Cave and Pothole Club Durmitor 2011 Expedition

example, cereal was in short supply. Muesli was a staggering 3.5 Euros per Kg. Almost as over-priced as the tubs of ice cream!

Meat is easy to buy, either as salami or tubs of pate. While we were there, sachets of some sort of tomato powder was available (“Tomato SOS”) but it probably wouldn’t be worth banking on.

Carbohydrate for lunch was one of our main problems. Bread is always available and fairly cheap, but we struggled to find anything for when the bread had gone. Perhaps a bigger expedition wouldn’t have this problem since food trips could be more frequent.

Numerous packets of beanfeast were bought from the UK. These are relatively lightweight to take by plane and combined well with pasta bought locally. We also imported a limited supply of de-hydrated mashed potato (aka Smash). This brought welcome variety to our evening meals.

Water

At the camp above Sedlo used on countless expeditions, the spring was close to camp, fast flowing and clean. This was not the case in the 2011 recce. There was no flowing water, just stagnant pools and various snow plugs/slopes.

The ASAK expedition in 2011 immediately preceded our recce. Peca reported that they found the snow levels were low and water levels high (relative to other expos in the same area). This should mean that the snow quantities are unlikely to be lower than we experienced on the 2011 recce.

The lake marked on the map at Crepulj Poljana was not drinkable. It had a large amount of green scum floating on it.

The pools in Donja Allisnica were varied in size, but all shallow, muddy and frequently used by live-stock based on the quantity of dung/droppings around. The water was distinctly peaty in colour. On arrival, we were forced to use this water to prepare our first evening meal. To cook the pasta we chlorinated and then boiled the water. (Fortunately no ill effects.)

At and around Camp 2, temporary pools formed after heavy rain which could be easily gathered. This was relatively pure in appearance. These pooling areas are easily identified by the shrubby plants with bluish grass on the slopes leading into them.

The majority of our water came from melted snow. The system we used was adequate for three people and could easily be optimised to support more people.

The snow slopes/plugs varied in quality. The surface consistently had a muddy layer that had to be scraped away. Underlying snow was sometimes slightly yellow(!) or contained patches of gray strata. It was collected relatively easily using pan lids and an enamel cup, although we’d try and avoid having to scrape at the icier snow. It was lucky that there were only 3 of us since the softer snow was almost depleted and the harder snow as difficult to collect with the “tools” we were using.

We filled either dry sacks lined with bin bags (3 to 50 l in size) or double bin-bags. These were then squeezed/pummelled into rucksacks for the walk back to camp. We endeavoured to collect only the whitest snow, but after melting, this still contained twigs, occasional insects, leaves and specs of dirt.



York University Cave and Pothole Club Durmitor 2011 Expedition

We stored the water/snow in a light weight, transparent survival bag. This was arranged on a slope with a rim of rocks around the lower rim acting as a dam. The rocks/ground was covered with a tarp or bin-liners to protect the survival bag from puncturing. A corner of the bag at the lower end was cut open to allow water to be poured out and was re-sealable using a plastic clip. The large contact area with the ground appeared to melt snow faster than other techniques tried.

After collection, we only emptied the double-layer bin bags of snow into the supply bag. The two dry bags could be left upright and emptied into the supply bag the next day. This reduced the stress on the supply bag and provided a little backup in case the supply bag failed. This also kept the supply bag chilled, which may reduce build-up of bacteria etc.

We collected snow approximately every 2 to 3 days. Typically, once per day we filtered and chlorinated more or less all the bottles we had. (3x1.5 l, 1x2 l, 2x3 l platypus, 2x0.5 l). For cooking, we just filtered the water and boiled during the course of cooking.

The filtering and chlorinating was a bit of a pain. We'd fill a 3 l pan, then decant it into the other 3l pan though a dense woolly sock (our "filter"). The flow rate though it was disturbingly quick! We then funnelled it into the drinks bottles using a chopped up 500ml plastic bottle. After about a week of using the sock filter, we discovered a small fabric filter in the chlorine tablet supply. This was a 15cm long fabric cone that quickly became blocked after just a few uses. We were unable to easily unblock it so quickly reverted to the sock.

Peca quote "Regarding water; there is a spring in Lokvice, a lot of snow in Velika Kalica (Previje), ice in the cave Ledena Pecina below Obla Glava peak; and also some shepherd huts in Alisnica (probably with some water)."

Camping

Our main priority for this expedition was for our camp sites to be discreet, since we were leaving camp unattended almost every day.

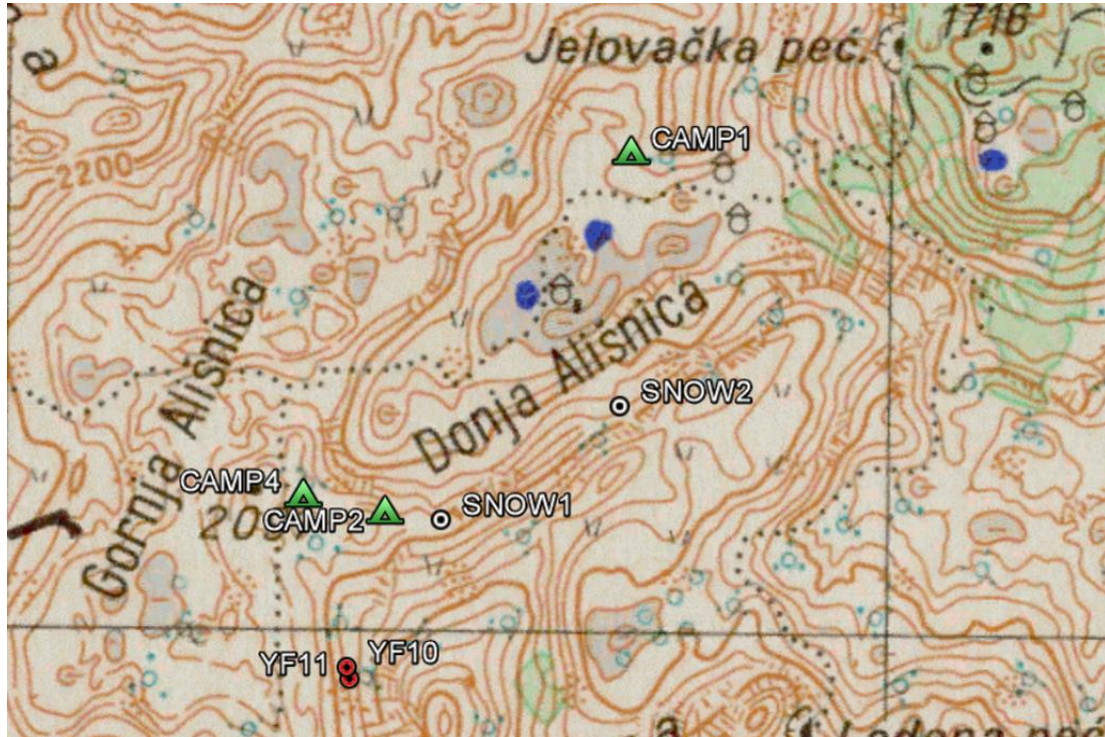
Camp 1 was chosen as it was the first discreet place we found once up the steep section, but turned out to be almost completely invisible from most places! It only has space for 2x 2 man tents, with a possible extra bivvy spot. It's surrounded by the trees which mean it's fairly popular with the flies!

Camp 2 was a bit more of a considered choice, since we'd been prospecting for the best part of a week before we chose it. It allowed us to be closer to a source of snow, as well as to YF1, YF9, YF10 & YF11 which we needed to explore, and to be closer to the areas we wanted to prospect in the second week. It has space for a flat 2 man tent and a sloping 3 man. There is potentially space for an extra couple of 2 man tents, but work would be required to prepare the pitches.

The areas marked as Camp 3 and Camp 4 were flat areas we identified as being suitable for more tents. Camp 3 suffers from having no decent water nearby, however Camp 4 was the best place we identified for more people. It is a clear area of about 10 m x 20 m with decent (by expo standards) pitches for about 4-5 two man tents and about the same number of places for sloping pitches. It's about 350 m from YF10, meaning it's close enough to a water source as well.



York University Cave and Pothole Club Durmitor 2011 Expedition

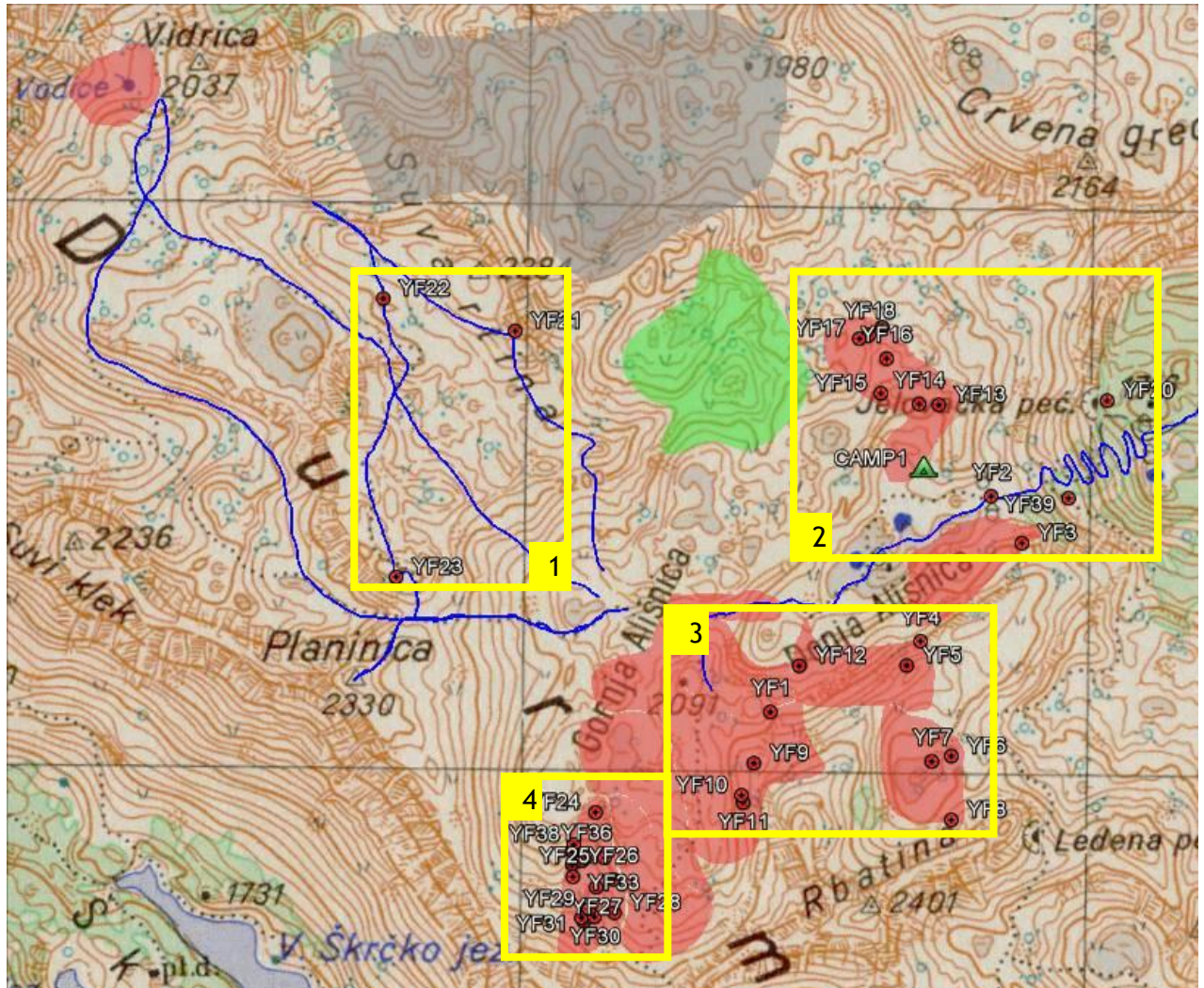


Map showing the locations of the different camping spots and the water sources.



York University Cave and Pothole Club Durmitor 2011 Expedition

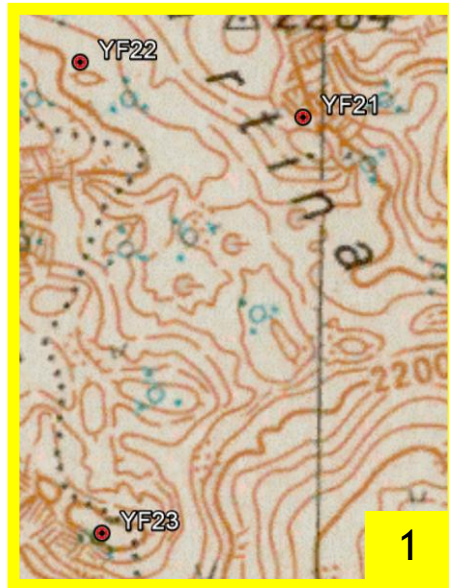
Limits of Prospecting



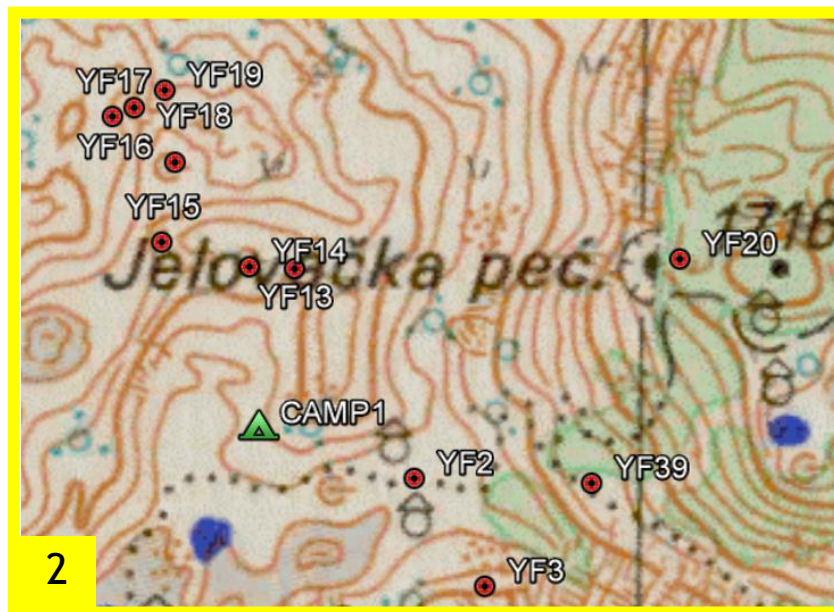
Map showing the areas systematically prospected (red), paths taken through areas not systematically prospected (blue), areas identified as having good potential (green), areas identified as having poor potential (grey) and all the caves found (red markers). Yellow squares are enlarged in the following 4 figures.



York University Cave and Pothole Club Durmitor 2011 Expedition



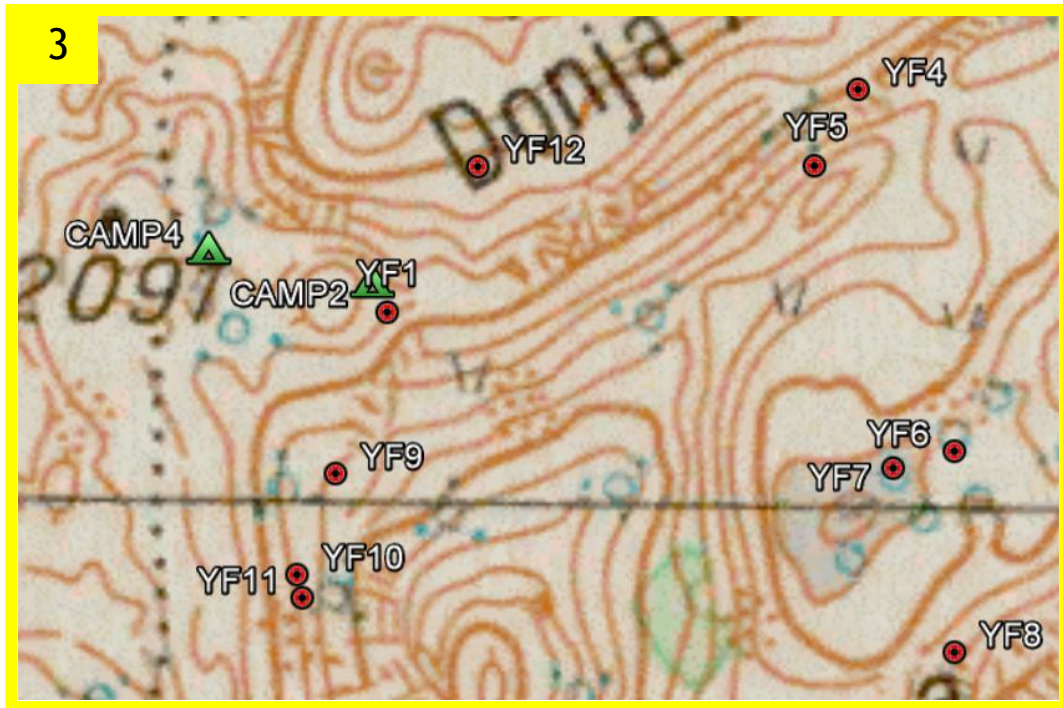
Caves found North West of Gornja Alisnica



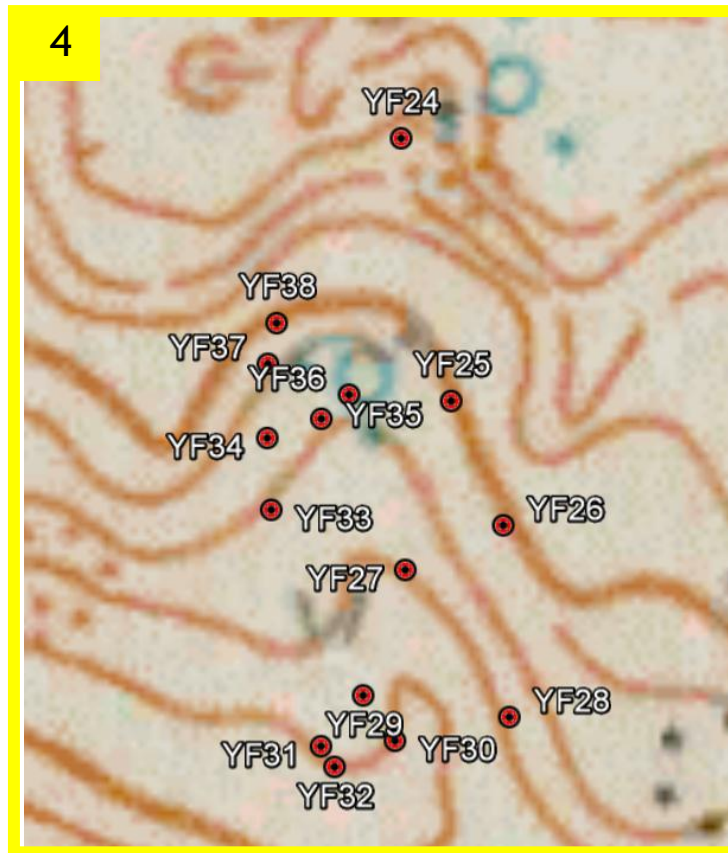
Caves found around Camp 1



York University Cave and Pothole Club Durmitor 2011 Expedition



Caves found near Camp 2 and in Kobilji Do



Caves found in the South of Gornja Alisnica



York University Cave and Pothole Club Durmitor 2011 Expedition

Donja Alisinica

Donja Alisinica is a long valley running vaguely East-West. At the East end, where the path runs, it drops away down towards the Zablak plain, and at the West end it climbs quickly to meet Gornja Alisinica.

The whole of the base of the bowl has been prospected. The South side of the valley has also been comprehensively covered, from the East End up to the col. The top of the ridge between the large, obvious cave mouth and the part of the ridge above the col has been explored fairly well, though there are patches of trees that make it difficult. It is also hard to join the valley side with the top of the ridge due to the ground being very steep and lots of trees. From the large cave mouth along the ridge to the East end of the valley is unprospected, although this area is unpromising and hard to access.

The North side of the valley is split into two sections by the point where Teleci Do joins Donja Alisinica. The West section is fairly unpromising, but there are some outcrops of rock which could be investigated. This would not take very long. The east section is almost entirely covered by trees.

Kobilji Do

Kabilji Do is a bowl with very high, steep sides to the South and West and a lower and less steep side to the North where it joins Donja Alisinica. The East side drops away in a similar fashion to Donja Alisinica. Kobilji Do is reached from Donja Alisinica over the col just to the West of the large cave mouth on the southern ridge. The bottom of the valley is filled with boulders. To the south is a long scree slope. The bottom of the valley and the South, West and North sides and about half way up the scree slope have been prospected. The area to the East where the valley drops suddenly has not been prospected and is worth some time.

Teleci Do

Teleci Do is a small valley running South-North. From the point where it joins Donja Alisinica toward the North end the limits of the valley are well-defined and it has been thoroughly prospected. At the North end the valley rises to join a higher plateau, which has been explored in a semi-circle out to point I and YF19. The rest of this plateau is worth looking at. To the North and North East it joins Valoviti Do.

Gornja Alisinica

Gornja Alisinica is a broad valley running North-South. To the North-East it joins Donja Alisinica via a small steep section. The South East, round to the West sides are very steep. From the West round to the North East the sides are slightly less steep. Looking from where Donja and Gornja Alisinica join, the valley appears to be bisected by a large rib. This is not obvious on the map but appears in the SSW corner as a small protrusion from the ridge. To the East of the rib the valley is either not worth looking at or has been prospected. The Eastern side of the valley has been looked at (YF10 etc), but the very South East end (near a large crack in the cliff) has not been looked at, though does not look promising. The rib itself has been prospected, but the rocky areas to the North and West have not. As a rough guide, then, the North of Gornja Alisinica requires investigation while the South has been looked at, except for the section West of the rib.



York University Cave and Pothole Club Durmitor 2011 Expedition

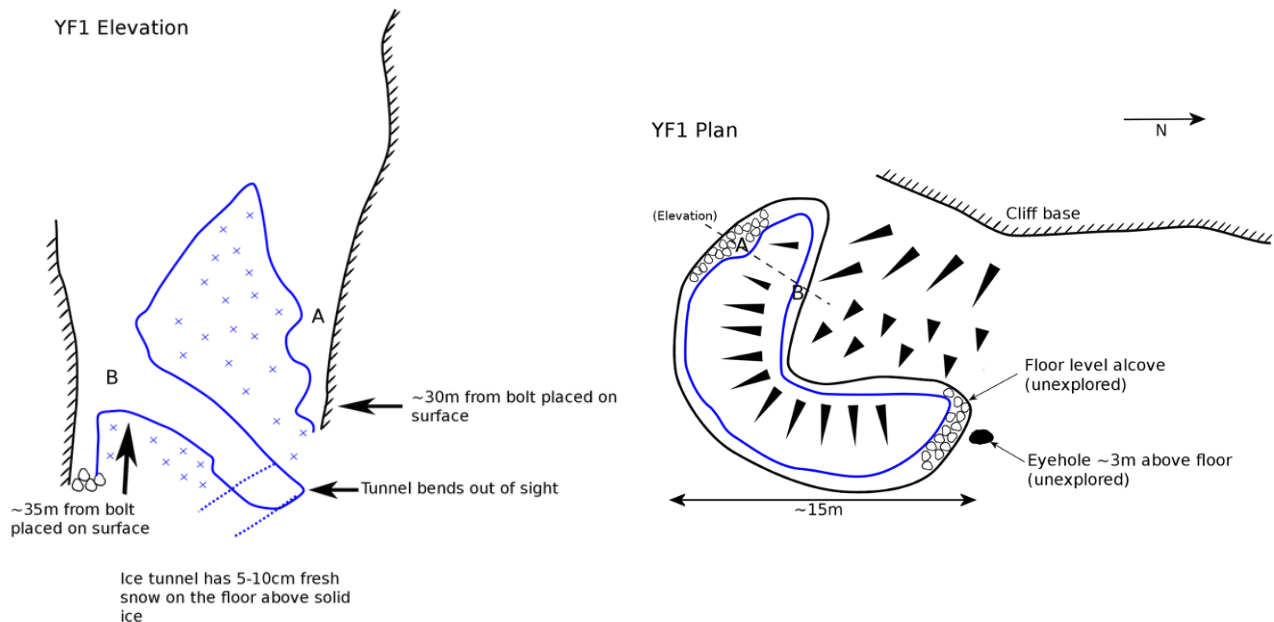
Caves

Used all our gear - needs a return trip:

YF1:

An enormous shakehole found on the southern end of the col between Donja Alisnica and Gornja Alisnica. The hole is an elongated oval shape running East-West with a protrusion on the Southern side (see survey). It is filled with a snow plug. The entire hole seems to slope towards the NE corner. This corner has been descended. Below the edge of the snow plug a snow tunnel bends out of sight - this is expected to be the way on, although finding it may be difficult if snow levels have changed. It may even not always exist. The sides of the shakehole are choked, though the SE corner has not been looked at and should be checked in order to be ticked off.

To the East of the protrusion on the Southern side a spit has been placed to facilitate a descent to the snow tunnel. The rope can be initially rigged from naturals (using nuts/hexes) above the protrusion then rebelayed to the spit. From here the descent requires a rope protector and then the caver to cross the snow plug and descend the opposite side.



YF9:

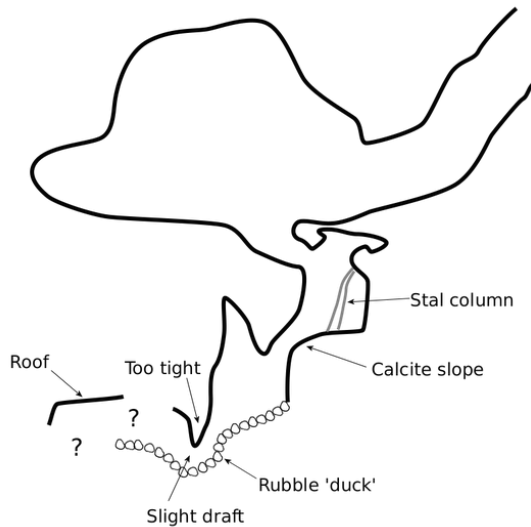
The entrance is a well-hidden opening about 100 m up the slope from YF1, on the right hand side. The entrance leads into a downward sloping passage which bends round to the right and emerges into a sizeable chamber. A few passages lead off this which soon dead end, but the passage on the left side (from the entrance) is more interesting. A short drop down leads to a stal column, which can be used to secure a short (~5 m) handline down a small hole which leads under the first chamber into a smaller one beneath. A small, rubble-filled crawl can be seen, which is yet to be explored.

The main problem with pushing the cave any further in 2011 was the risk of loose rocks causing a blockage at the top of one of the short climbs. While Steve investigated the "rubble duck", Toby remained at the top of the previous climb to reduce risk of both getting stuck. More people with full caving kit could investigate more safely and effectively. The slight draft gives the cave some appeal.

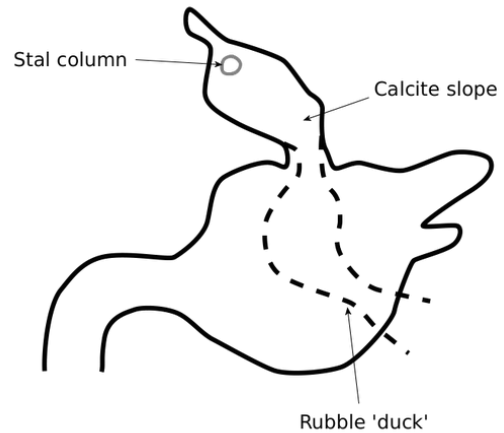


York University Cave and Pothole Club Durmitor 2011 Expedition

YF9 Elevation



YF9 Plan

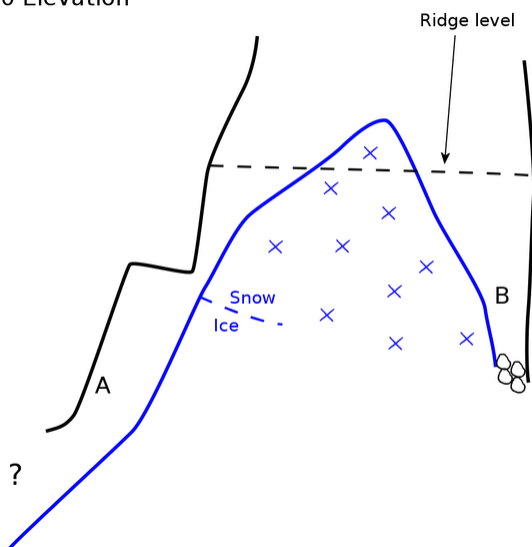


YF10:

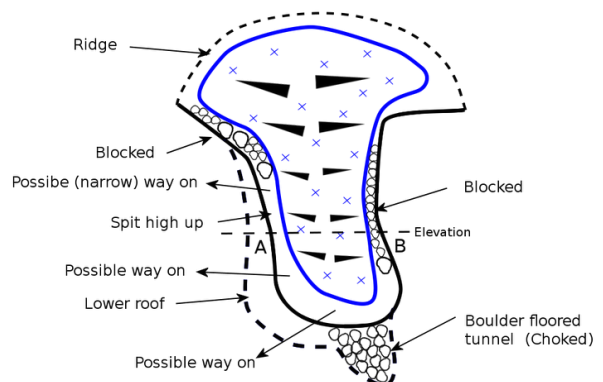
It is possible to walk on to the YF10 snow plug from the ridge line at the top of the plan. The left hand side (towards label "B") wasn't very promising. The opposite side was descended on rope tied high above label "A" and re-belayed on a spit (see plan). As shown on the elevation, the snow plug turns to smooth ice below a roof and slopes away out of sight. Not much further down from the roof, rope rub makes progress dangerous without placing another spit. The ice was very hard, smooth and steep. It looked like it wouldn't change much from year to year. A severed rope at this point is likely to be fatal.

The gap between the rock and the ice was about 1m at the roof (good place for a spit if I had bought the bolting bag down with me), and then widened to about 2m. Looking down from here, the gap between the rock and ice increased and the slope widened out. After about 15m visibility the rock obscured the view of the ice, possibly as the gradient of the ice levelled out. I would expect the ice extends down to boulders at the foot of a wall that rise up to meet the ceiling, forming a chamber. The slope fans out to a base that could be 10 or 20m wide at the bottom, increasing the chances of there being a way through and down.

YF10 Elevation



YF10 Plan





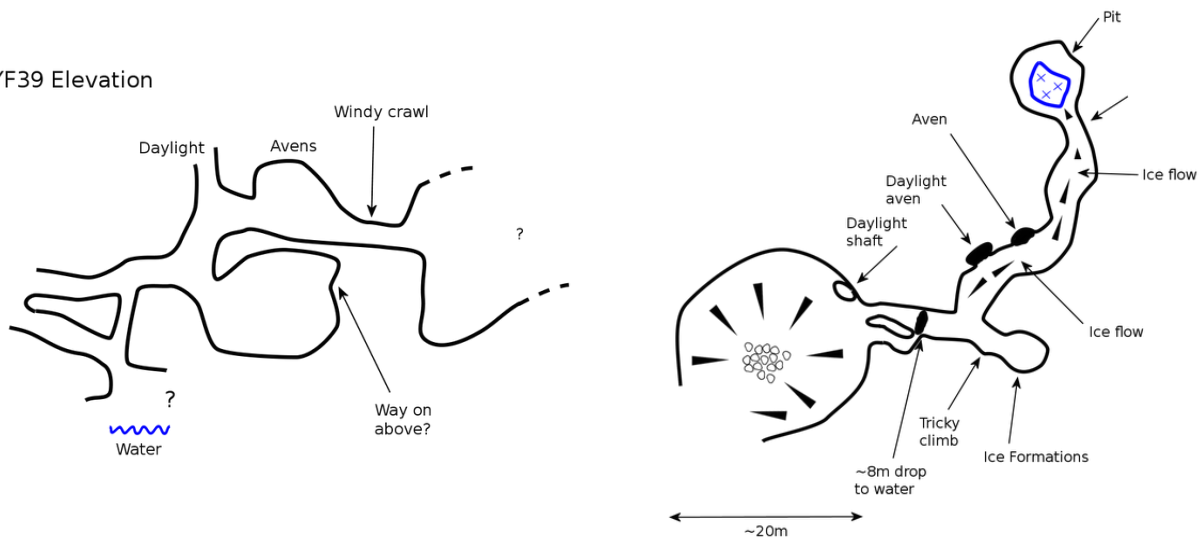
York University Cave and Pothole Club Durmitor 2011 Expedition

YF39:

From the very steep part of the path up into Gornja Alisnica an enormous cave entrance can occasionally be seen about 200-300 m away to the South. This is YF39. The entrance is undoubtedly known due to its size, and signs of visitors at the entrance. Inside the cave, however, there is no evidence of exploration and it is possible the cave is not fully explored, at least those parts that require SRT to reach. The large cave mouth that can be seen from the path is in fact a natural arch. The 20m wide bowl on the bottom left of the plan is open to the sky, with its sides towering cliffs forming natural rock arches. The actual entrance is to the right of this arch in the side of the cliff. A small climb leads upwards from the entrance over a hole through which water can be seen. A smaller entrance to the right of the main one connects to this hole, and has not been explored. At the top of the climb passages lead down straight ahead and up to the left. Straight ahead a downward sloping passage leads after a few metres to a climb down into a small chamber with ice formations. There are avens overhead but there is no way on from the chamber. Back at the junction the slope up to the left leads up to a daylight window which can be reached from the outside. The passage then bends to the right, passes some ice formations and lowers to a crawl over rubble. Here the cold draft in the cave can be felt very strongly. After the crawl a vertical drop is reached which will require rope and most likely bolting to descend.

YF39 Plan

YF39 Elevation



Worth a return:

The following caves were either not descended because we didn't have gear with us at the time, or they looked like a promising dig:

YF11, YF17, YF26, YF28, YF31, YF32, YF33, YF34, YF35, YF36

Possibly worth a return:

This category includes entrances that needed gear, but didn't look too promising, or things that looked like less promising digs. Basically anything better than having no potential!

YF4, YF5, YF7, YF8, YF13, YF14, YF15, YF16, YF18, YF19, YF20, YF24, YF29, YF30, YF37



York University Cave and Pothole Club Durmitor 2011 Expedition

Rubbish:

It's fairly clear what these are. Not worth revisiting:

YF2, YF3, YF5, YF12, YF21, YF22, YF23, YF25, YF27, YF38

Tips (for a flawless Durmitor expedition)

This section was put together either during the expo or while we were waiting for the bus in Zabljak at the end. There are a few bits and pieces that repeat earlier bits of the report, but it won't harm to see them again!

General water things

- Research water purification. Reading briefly about chlorine purification on Wikipedia, there are some down sides were not aware of. These should be fully understood and accepted.
- Careful selection of snow slope. Noting that the snow quality just below the surface isn't always representative since there might be grey strata just below. (The case with a lot of 'Snow 2')
- On arrival at camp, assess local rain water pools. Consider maintaining them as "clean" and possibly consider automatically catching water from the channel of blue/green grass entering it.

Stagnant pools

- It is probably safe to assume snow is much easier to purify.

Snow Collection

- Use better tools. Pan lids & a mug weren't great. Consider spade, rake, shovel, saw etc.
- Load snow straight into a lined rucksack (Bernies bag liner)
- It melts surprisingly slowly, so it's fine transporting it in bin bags within a rucksack. It won't instantly melt!
- Potentially carry heavier loads of snow per collection i.e. 20-30 kg rather than ~10-20 kg.
- A spring balance would have been useful to work out how much (in liquid litres) was being collected. The snow reduced to about half its original volume when melted.

Snow storage

- Use a more robust supply bag. (How beneficial is it for the bag to be transparent? Sun heats ground under the bag rather than the water directly?)
- Build a tap and filter into the bag. Either using a siphon pipe or some sort of tank-adaptor fitted to the bag.
- Use a filter that is more effective than a sock
- Use a funnel that is better than the bottom of a 500 ml bottle



York University Cave and Pothole Club Durmitor 2011 Expedition

Zabljak Food

- Mixed Meat at Cafe Durmitor is 9 Euros for 600g including 8 varieties of meat. Appears to be the best value in terms of grams per Euro
- Breakfast cereal as very expensive in both shops. Bring your own
- Couldn't see any couscous. Pasta is easily available though
- Tinned meat/pate seems readily available and fairly cheap
- Availability of savoury crackers etc seems patchy - sometimes available
- Powdered milk availability unknown
- Big (1 kg) vacuum packed peanuts seem readily available
- Snickers (etc) 50 cents each and limited variety

Zabljak (general)

- Post office & bus station close on Sunday, possibly other shops too
- Stamps only available at the post office
- 11:00 and 14:30 buses run by different companies
- Taxi to Zminje Jezero (nearest paved point to expo area) cost between 5 and 7 Euros and will not go on unpaved road (Tourist info has details of 4x4 "taxi" but quoted 25 Euros to village north of expo)
- Taxis are probably easiest flagged down just on road near the centre
- Return bus to Belgrade is an open ticket so it's recommended to reserve return bus ticket to Belgrade a few days before travel
- There's an internet cafe near Restaurant Durmitor for about 1 Euro for 10 mins and it's also possible to print
- Gas (piercable) can be bought from the shop down on the right (about 100m) along road heading East from the centre for about 80 cents each and they also sell cheapo looking stoves for 5 Euros
- Screw top gas is not available anywhere
- There is a petrol station in Zabljak, just down from the bus stop
- There is a cash machine near the betting shop towards the petrol station (Also a second machine towards the gas cylinder and hardware shop, but we didn't use it in 2011)

Other

- Allow about 5 hours for walking (very heavily laden) from Zminje Jezero to Camp 1, allowing an extra hour to Camp 2. We managed it in 3 hours to Camp 2 after a light food shop.
- Locations of snow: Snow 1, Snow 2 (dirty in 2011), YF1 (needs SRT), YF10 and YF11. The latter 2 are easy (ish) to contour from Camp 2.
- Snow melts the fastest spread out with good ground contact (the strength of the sun didn't seem to make much difference)
- In 2011, there were areas of bilberries. These might make a welcome addition to cereal etc. There were also reasonable numbers of mushrooms, but may be difficult to identify! Jelena mentioned them so it is theoretically possible for them to be eaten.
- We saw horses but had no problems with them at camp. There was a reasonable amount of horse dung in varied places (i.e. they get around)
- On the last day there were about 8 cows grazing on the lower ground
- No wind = lots of flies. Bringing fly tape really might not be a bad idea! Also little biting insects but not so many. Enough to warrant some repellent though!



York University Cave and Pothole Club Durmitor 2011 Expedition

- At the weekend (in mid-August 2011), we tended to see 5 to 10 people per day. On week days < 4 per day.
- There was very little wind in 2011. May or may not be representative for the area.
- Navigation up from Zminje Jezero is not really straight forward. Attention is needed.
- Take water proof over trousers. No questioning.
- There are a few possible wild-camp spots lower down the mountain towards Zabljak. Crepulj Poljana looks ok. The next flat ground is where the off-road track passes the foot of the hill. Less than 1km further on, in the woods to the right, we camped on what looks like an infrequently used grassy path. None of these have their own water supply, however in the morning we found likely good camping spots by the small lake (Barno Jezero).
- The bus (Belgrade > Zabljak) cannot be paid for in Euros. However, there is a kiosk at the bus station that exchanges Dinahs.
- Rope protectors should be looked at before you go! Make sure the connector at the top has no slack between it and the rope protector (i.e. short prussik loop or bulldog clip on a v short cord) or it will probably slide up - this happened several times on this recce. Also consider an extra connector on the bottom to hold it in place.

Weather Summary

Sunday 7th August 2011



- Shopping
- Walk up
- Find camp
- Use muddy pool water for cooking

Monday 8th August 2011



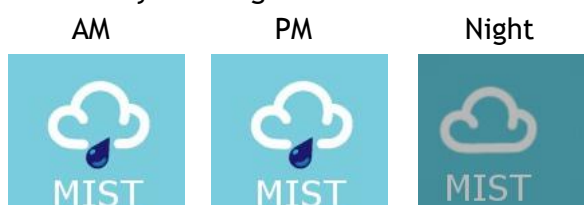
- Straight to Snow 1 to collect snow (and water for breakfast cereal)
- Found YF1
- Prospecting (opposite Camp 1 and down valley)

Tuesday 9th August 2011



- Prospected other half of S side of Donja. Alisnica
- Prospected in Kobilji do
- Snow collection from Snow 2

Wednesday 10th August 2011



- Mist, drizzle, cloudy and cold
- All day in tent
- Steve converts stuff sack into yeti gaiters



York University Cave and Pothole Club Durmitor 2011 Expedition

Thursday 11th August 2011

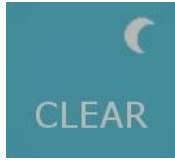
AM



PM



Night



- Prospecting col between Donja Alisnica and Gornja Alisnica
- Went up to high point above YF1
- Found YF9,10,11
- Got snow from Snow 1

Friday 12th August 2011

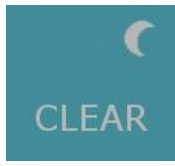
AM



PM



Night



- Built horse barrier at Camp
- Prospected Teleci Do
- Suffered mild heat stroke

Saturday 13th August 2011

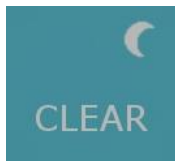
AM



PM



Night



- Moved camp
- Rained heavily while collecting snow and exploring at YF10.

Sunday 14th August 2011

AM



PM



Night



- Shopping in Zabljak
- Mixed Meat
- Rained on way back up
- Drizzle all evening

Monday 15th August 2011

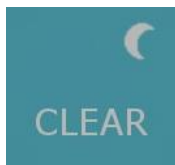
AM



PM



Night



- Descended YF 1, 11 and 9

Tuesday 16th August 2011

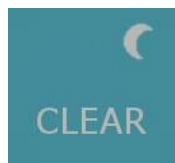
AM



PM



Night



- Investigated Vodice spring (north west of camp) and possibility of camping there in 2012
- Massive thunderstorm on the return



York University Cave and Pothole Club Durmitor 2011 Expedition

Wednesday 17th August 2011

AM



PM



Night



- Visited V. Previja
- Visited cave SE of Supljika
- Visited view point
- Saw about 10 people near view point
- Evaluated Camp 3
- Collect snow

Thursday 18th August 2011

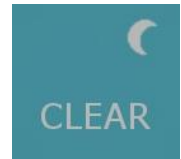
AM



PM



Night



- Prospecting. Found loads on inner ridge in Gornja Alisnice)
- Evaluating Camp 4
- Burnt rubbish
- Failed to burn spare gas

Friday 19th August 2011

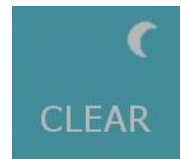
AM



PM



Night



- Descended YF1
- Moved camp to near Zabljak
- Mark drew short straw to fetch prospecting kit from back at Camp 2
- Toby and Steve investigated large visible entrance (YF39)
- 4x4 Ragging around on track at base of path
- More gas "disposed of"

Saturday 20th August 2011

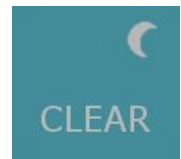
AM



PM



Night



- Early start to Zabljak to ensure successful bus ticket purchase at 8:00. (Bus booking office late opening, 9:00)
- Relax
- Arrive in Belgrade (No return text from Voja about meeting up)
- Eventually taxi to airport (29.9 Euros)
- Sleep

Sunday 21st August 2011

AM



PM



Night

- Arrive in Luton and collect EuropCar
- Drive back to York



York University Cave and Pothole Club Durmitor 2011 Expedition

Expedition Diary

While we were on the expedition we tried to keep a diary each day. We hoped that not only would this jog our memories when we inevitably forgot details of what we'd done and found, but also give a bit more of an anecdotal account of what we'd done. Hopefully it will therefore give an idea of what the expo was like, as well as giving information on what we found. And it might just be an enjoyable read. You decide.

Sunday 07/08 Mark

Arrived in Zabljak at ~8am and brought food and gas. Hardware shop was shut so we couldn't buy paint. Met Voja at the bus station who wasn't very happy after 2 weeks of rain. Luckily it had stopped and we had lots of sun. Got a Taxi to Zminje Jezero (€7), but the driver didn't take us all the way. The walk was OK until the steep bit, and the non-military maps didn't correlate brilliantly to the ground. The plateau with lake and cave marked is very flat and grassy. The lake is rank - no chance of using it as a water source. Didn't have time to check the cave. Steep section isn't easy going but is relatively short. ~5 hours walk - very heavily laden and stopped for ~1 hour at one point and a couple of other short breaks. The lakes in Donja Alisnica are either dried up or pretty scummy - animals had clearly drunk there. We boiled and purified for 1 meal and 24hrs later haven't died! Camped on the Northern side before the lakes (coming from Zabljak). Not enough food, water or sleep so had an early night.

Monday 08/08 Mark

Had half a litre of water left and didn't want to reuse the lake. Ate some 4 day old cheese sandwiches but couldn't stomach the cheese itself. Then set off for snow patch on the southern side of the western end of Donja Alisnica (~1km away). Filled up lots of containers (3 dry bags, 1 bernies bag and 1 extra bin bag) and left some to melt while we looked over into Gornja Alisnica. Couldn't see any lakes marked, but found Yf1, needs a return visit. Got back to the snow ~1hr later and just one mugs worth had melted (in full sun!). Used bits of leftover water for breakfast (tasted fantastic) and carried over 40kg of snow back to camp. Realised how hard it was to melt so tried several different methods. Finally chose a survival bag in a tarp, this melted just enough to take prospecting. Prospected from eastern side of the southern slope to below the massive entrance where we found another snow patch. Found Yf4, needs a return with SRT stuff. Difficult route back to camp - would be poor for collecting water. Also managed to collect some wood for melting snow in case of a cloudy day. Found out later on that tea made from pasta water isn't too great. But all feeling better after lots of food, water, sleep and prospecting. In total during the day we saw 10-15 people walking through.

Tuesday 09/08 Toby

Weather was sunny in the morning. Breakfast bags (Muesli, sugar milk powder - just add water!) for breakfast - yum. We walked towards Snow 1 to prospect the other half of the Southern side of Dojna Alisnica. We split up to go up the steep part of the valley - very sketchy routes and no caves. Investigated the huge cave on the skyline (Yf5), which is made out of horrendous rock. I was climbing about beneath it and a large rock I had both feet on turned out to be less sound than I had thought. Scary! At least I missed Steve and Mark. From the col near the cave we went down into Kabliji Do and prospected in the bottom. The sky had clouded over and a load of mist had turned up by this point, meaning we didn't see the ridge on the other side of K do until we were right below it. It looked massive hovering above the mist! Steve found a ~4m shaft that could do with a look down with some rope. We found some drafting digs, but more man power and gear will be required. Good draft, though it may come up through other boulders and holes in the bottom of the valley. More interesting stuff around the bottom of the valley, so might make a fun day working out where the draft comes from. After playing about here for a bit we headed across K do to a snow plug on the other side. There are caves behind and above it (Yf8). The one behind is large and interesting but short.



York University Cave and Pothole Club Durmitor 2011 Expedition

We headed back round the side of K do and over the col back into Dojna Alisnica. It tried to rain at this point but it didn't come to anything, though the clouds looked ominous for the rest of the day. We visited snow 2, the patch we had found yesterday, to collect some more snow. We couldn't find a good way back to camp however and ended up going down the same gully we had used yesterday. It was more interesting with heavy bags! Loads of water in the tarp back at camp - around 7 litres? 3 course dinner - peanuts to start, followed by pasta with beanfeast and chilli and then a fruit/custard dehydrated meal. Proper cuisine. Gas canister change went a bit wrong - the new canister is pierced but not sealed very well. Gas is escaping so the canister might be empty by morning. If this happens with other canisters and they are essentially one use we will have enough to last until Friday. Cooking noodles for tomorrow's lunch now in case the gas runs out.

Took 1.5l of water each today, Me and Steve only had about half that.

Wednesday 10/08 Steve

The day started with heavy mist and drizzle. The briefest exposure to this leaves everything cold and wet! Actually it was bloody freezing anyway. The 3 of us huddled in the tent wearing full clothes was only just warm enough. This was the trend for the day. We periodically discussed whether it was worth getting feet piss wet for either prospecting, checking out water in the higher bowl or the spring. We decided that's what we'd do if the next day was shite since we needed a rest anyway. I previously tried knackered plastic bags as improv gaiters (yettie) using bungee loops to attach to the crampon grooves. In case the weather was here to stay I spent some time making gaiters out of a stuff sack. These were tested on a loo trip and to fetch wood for rain collector and they were pretty good apart from not being high enough to protect shins in the long grass. To stay sane we had lots of Carcassonne games (on the unstable tectonics of the tent floor).

Thursday 11/08 Mark

Thankfully we woke up to sunshine again. It wasn't a normal Durmitor morning though - waterproofs were needed to stay warm enough for breakfast. We weren't too fussed though since it wasn't actually raining. With snow 1 getting worryingly small and snow 2 being not particularly white we wanted to have a look at Gornja Alisnica and see if camping at Yf1 (with its huge snow plug) would be feasible. We started off across the NW side which was pretty unsuccessful. Weirdly despite the clear blue sky we were still pretty cold. Prospecting towards Yf1 was still unsuccessful but it seemed like none of us cared - at least it was sunny. Luckily it looked like there was a pretty good camp by Yf1 of we carried on prospecting up the slope where we were more successful - Yf9 with some weird formations, and Yf10 and Yf11 with big snow plugs, all needing revisits. We were quite high on the ridge so opted to go to the top. Well worth it for the awesome views and without the Bobotuv Kuk crowd! We finished up prospecting northwards along the base of the bowl but there was just scree everywhere. Feeling a bit tired so we went straight back to camp via a last snow collection at snow 1. Back at camp it was good to see someone walk within 20m of our camp without a clue that there were any tents around. Later on the two horses we had seen earlier in the day turned up at camp. Who needs expo dog when you have expo horses? They were pretty close to camp and we were worried about the damage they could easily inadvertently do, so we agreed to chase them off with different methods bringing different results. Shouting at the top of your voice in their face: no response. Running towards them with a small bush in each hand: causes a stampede in the opposite direction. It crossed our minds that we may have to build some sort of fence if they were still around in the morning...

Carcason score M- 4 S - 3 T - 1

Friday 12/08 Toby

The horses were still loafing around in the morning. Fearing that they might destroy camp looking for food, we built a horse defence out of scrub branches and rocks. We hoped it would deter them at least. For breakfast we had the box of cereal we had brought up from Zablak,



York University Cave and Pothole Club Durmitor 2011 Expedition

Plazma or some such. It consisted of broken biscuits and dried fruit - bizarre but nice. On the way out of camp we chased the horses into the bottom of the valley so they weren't near camp.

We prospected up Teleci Do, the valley behind camp, finding a few small things. Beyond this we entered an area of exposed limestone with loads of rift-type entrances. This area suffers from the Durmitor curse: loads of promising entrances, none of which have the grace to go anywhere. We marked a few that we couldn't reach the bottom of. This area is worth a day or so on a future expo but we don't have the time. From here we went up onto the ridge to find more of the same, apart from a large hole with a snow plug that looked fairly good (Yf19). The sun had been ridiculously strong all day and we were all suffering mild heat stroke by the time we got back to camp. The horse defence had worked a treat as it was still standing! Unfortunately it didn't work on the flies. Mash and dehydrated meals for supper, and not too cold.

Saturday 13/08 Toby

Camp moving day! We packed up very quickly in the morning. Had to leave some snow behind, so Steve built a snowman with spits for eyes. We only carried about 1.5L of water each so worried a bit about melting snow in time in the afternoon. Time would tell that we had nothing to worry about...

It took about 50 minutes to reach our new camp. The site is just above Yf1 in a bowl-like depression. Mark's tent turned out to have a very flat pitch, which was a nice change from the previous camp. Steve's was also an improvement on last time. We worried about the bowl filling up with water if it rained hard so dug a drainage ditch in the bottom of it underneath the tents. Further earthworks were needed to remove some big rocks. The 'leave no trace' rule was clearly not at the forefront of our minds! (It was all stuff we could tidy up when we leave.) After lunch we headed off to Yf10, one of the big entrances with snow in we found a couple of days ago, just round the shoulder from camp. Steve fuffed around for a while with his extremely lightweight and non-adjustable SRT kit. Our 40m of rope was not enough for him to reach a conclusion in the cave, and the continuation looked promising. This makes Yf10 our first interesting lead to take back to the UK! It began to cloud over while Steve was underground, and the rain started as he was derigging. Light rain quickly became heavy rain, and that turned into hail. I huddled under my umbrella and Mark under his waterproof, while Steve romped about in his oversuit taking pictures of us. The rain became rather like standing under a powerful shower, and my umbrella got rather out of its depth. Before too long we decided to run back to camp, getting seriously wet in the process. Back at camp the rain had created a pool which we used to fill up our water container. With that and the snow we had collected at Yf10 our supply is pretty good, though the container needs to be propped up with the bags of snow. After sheltering in the handy storm shelter cave above Yf1 for a while, the weather cleared up. Our feet were wet and some of our important documents were slightly damp, but apart from that we had survived the storm. Hopefully the weather will be nicer tomorrow for shopping in Zablak!

Sunday 14/08 Mark

The outlook when we set off at 7 was good - sun on the tent and a clear blue sky. Food reserves weren't low, but slightly imbalanced so that breakfast consisted of 5 dehydrated puddings between us. We got down to Zablak in around 3 hours plus a bit of time prospecting the big cave on the map. Shock horror, it goes nowhere. We went straight to Restaurant Durmitor having been thinking about the mixed grill for days. Pleasingly it appeared to be the best value on the menu (€9 for 600g - why can't menus in the UK tell you the mass of each meal?) so we decided against ordering the 'breaded a hard cheese' and stuck with mixed grills, along with some French Fires (not a typo) for good measure. Steve hadn't sampled it last year but it's probably fair to say that it lived up to expectations: 8 types of largely unidentifiable meat. Sadly our other objectives in Zablak were less successful: post office and bus station both closed, but we did manage to get the food for next week. As usual there were



York University Cave and Pothole Club Durmitor 2011 Expedition

slight complications - are these biscuits sweet or savoury? Etc etc. We managed to sort printing our boarding passes (follow the 'internet game' sign!) too. Flagging down a taxi is made fairly easy by the fact that the drivers couldn't care less where they stop. He said it would be €5 to Zminje Jezero. €2 less than last time but we didn't have the luxury of seatbelts in the back. We had to stop to use the map to navigate at one point and he spent an alarming amount of time looking down at his phone rather than at the road. Nevertheless, we got there safely, paid our €5 and set off at a fair pace up to camp - we'd only left ourselves about 3 hours of daylight. Before long we saw a lake on the left signalling that we'd made a wrong turn. We soon saw our mistake and were going well up the first steep section when a scree slope on our right showed that we'd evidently taken another wrong turn. We lost most of our height finding the right way but managed to make it to the top of the steep section about an hour after leaving the taxi. That included a couple of obvious entrances near to the path, again going nowhere. It was at this point that the rain started - about an hour from camp. It got worse along the way, with a fair bit of thunder and lightning. At least we'd dug the drainage channel. We spent a bit of time waiting for the rain to ease in the little cave right next to camp 2. The rain did ease just enough to all get into the 3 man tent for a few games of Carcason before bed.

Monday 15/08 Toby

Morning was nice and sunny, but this didn't do much to dry our boots and clothes from the day before. Breakfast was a reasonable portion of muesli (500g between 3 is about enough, no less). After this we decided to give Yf1 a go since that would give wet stuff more time to dry, being right next to camp and all. I got my gear on while Mark and Steve did some rigging. They chose a line down the NNE corner of the shakehole over a big protrusion. The protrusion needed a rope protector, but beyond it the choice of route offered a ~10m hang onto the snow plug. Going down the side of the snow plug took a lot of rope since I had to traverse along it toward end of the shakehole as well as down. Hopping about on the snow plug shows clearly the disadvantage of bringing no undersuit, especially with a colander-style oversuit. The underside of the snow plug is a strange place full of weird grottos and ledges where the snow melts. I ran out of rope before I could explore it properly. This is the place to look I think, as the whole shakehole slants towards it and a fair amount of water goes down here. I explored down the other sides of the shakehole toward the other end of the snow plug, but these are choked. I couldn't make it over to the other corner because this would have pulled the rope around too much over the sharp sides of the hole. That corner looks less promising anyway. Unable to reach anywhere else because of the sharp sides, I got back on the rope. You don't really appreciate the size of the Yf1 hole until you prussick out of it. At the top I found a rather disturbing rub point, created no doubt on my way back from the promising corner. Typically, the rope protector had ridden up. Sorry Steve! On my way up the grassy slope above the protrusion the bolting kit somehow unclipped itself from my harness and tried to make its own descent of Yf1. It was only prevented from going all the way by the rope below me, making retrieval difficult! I got it back and packed in the caving before I caused any more problems. For lunch we had some canned mystery meat, which was great. In the afternoon we headed to Yf11, the second of our 2 snow caves. Mark went down and reported plenty of slippery ice but no continuation. We weren't too disheartened though, since 2 of our big 3 leads were still going. We had planned to collect snow, but had forgotten our usual implements, so used a bolting hammer, a hand jammer and Steve's helmet. We got back to camp early afternoon, so decided to have a look at Yf9, up the slope above camp. We descended the climb we had left. Below this, a small slot leads down into a chamber below the first one (rope needed) and to a small crawl where there may be a continuation, but we didn't have time to check further. It had been threatening to rain all day but didn't, so we had a dry evening for the first time in 3 days. We made pasta with a tomatoey sauce, to which we added stock cubes, salami, lasagne seasoning and garlic powder. It turned out as one of our culinary highlights, possibly because of the MSG in the sauce? Anyway, spring searching tomorrow if the weather holds.



York University Cave and Pothole Club Durmitor 2011 Expedition

Tuesday 16/08 Steve

Checking out the spring - Vodice

I got up early (awake) and sewed up the seat of my shorts (again) and fixed a zip. Mark, followed by Toby, got up to the overcast day. Breakfast was improved by approx 50% milk powder. Toby discovered water filter that came with my chlorine tablets, appears to filter as opposed to the sock which just removes leaves etc. (Better late than never). The plan was to check out Vodice spring at the bottom of Poljice. Reason being that it might be a good camp location; it's close to Ugrade Koljibe (reachable by taxi from Zabljak). It also has fresh prospecting around it. From camp 1 we went to the col at 2251 (past fat frog!). Sun was out at this point, but breeze (nice change!) meant that it was comfortable. Then NW along horse path down Mededi Do. Supljika entrance is impressive on right. Enormous rock bridge with mouth entrance to its right ("we'll check it out on the way back"). We stayed a little higher on the right of the "horse track". The steep ground (scree/cliff) to the SW doesn't look promising. Nor does the scree filled valley below. There are a few interesting looking shadows/cracks, but not worth much attention. Up on the right looks much more promising, def worth prospecting the bottom of the cliff. Further along (toward the intersection with the dashed path) the NE area still looks promising (from our vantage point at least) as end widens out so more area. The undulating rock the horse track follows is grass with exposed rock and shakeholes. Worth looking at but not amazing. Along the ascent (NW) on the red-dashed path my right boot suddenly didn't feel quite right. Bollocks, the back and middle of my sole had come away. Entire sole now held on by cable ties previously employed to hold the front on! (This was about 50m after Mark slipped on the scree slope and drew blood from his thumb. Only one plaster's worth but made a mess). Sat and got string and cable ties together to fashion a repair to my boot. Double bollocks! Sat on a nest of black stinging ants. Best repair meant I couldn't remove boot without removing the string holding the sole on - never mind. We rounded the ridge into Poljica - lots of low trees and unclear path or nav features. The 'path' typically looks like drainage channels between gaps in the trees. No trace of the 2 buildings. Very little to triangulate from. We probably veered of the path to the right before the spring. The drop down behind Vidrica (2037) looked to be the wrong orientation. While I try and triangulate Mark and Toby drop down a slope through trees etc. Mark reports back that it's totally unsuited to camping and didn't go far enough to locate the spring cos waste of time (I think the number of flies and ants were a factor, also the unexpected lay of the land and potential and bushes/trees). I went to see this for myself (and actually find out if there was a spring flowing as this was the primary point of the day). Before reaching the spring the ground is in no way flat/rounded but full of little valleys/scree/trees. We stop to discuss again. Assuming there is a water source the area may/may not be suitable for camping another year. Easy walking distance from Ugrade Koljibe compared to from Zabljak. Would there be a shop there? How much would a taxi from Zabljak cost? Distance to prospecting sites/going caves. Remote camp or not et etc etc. Since we were almost on top of the spring I felt the info about the spring and ground/camp was essential. Our best guess at our location put the spring on a flattish shoulder in front. I headed right, for some reason Mark/Toby left (shake hole ridden valley between). Presumably a bit of a comms breakdown leading up to this as I thought we shouldn't be splitting up on the choppy ground with trees, especially since storm evident. Not liking the look of their route and not wanting to insist they come with me, I go my own way down expecting them to do the same and we'll meet at agreed point or they'll wait and I'll return. Mark wasn't interested in finding spring, but suggested splitting up was fine. Fluked easy route down to grassy area that's flattest around (GPS'ed as E). About 10/15m² with space for 3-4 tents. Potential for other pitches in the area. Large sloping areas good for mess tent maybe. However, patches of grass churned up by wild pig/boar? One large rock had been recently flipped over leaving its soil depression - a pig did this? Person used rock to cover poo? No sign of poo - checked. Curious. Search for spring. A few shrubby (wet) slopes lead down but following them up, no spring. The series of deep shakeholes descending in a line (about NW) finish in a very narrow gorge (~10m long) before spewing out over slope



York University Cave and Pothole Club Durmitor 2011 Expedition

down (clearly I'm far too W). I find a path and follow it N to confirm it's the path. After ~100m it clearly is the path. Cliff N of Dolori (south of 'upgrade') is clear. This is probably NW of 2037. Back track. Path visible from where we struggled into the area, showing we were off route from the start. Search a little more for spring - no sign. Toby and Mark presumably waiting so time I headed back. Tried to follow path and head left (E) but blocked by trees so have to go all the way round (still no spring). We met up. Big problem is not know our sodding location. Pointless looking for spring in wrong area. Boot up smart phone with actual terrain google maps. Contours match walking map exactly. Spring should be 50-75m NW. All three search. Conclude that a particularly shrubby gully feeding a series of shakeholes was the spring, but choked up. I follow this up a gully through shrubs and trees. In the middle some stubby trees. Means what? Further up, wall of rock over which is shake hole (~5m deep) bottom at same height as top of shrubby slope. Spring flows from above into this then under stone wall and down shrubby gully? Shakehole bottom curiously full of animal bones and pine cones. Weird. Cliffy bits at top of shakehole have evidence of previous water flow (storm?) but no active water. An empty water bottle curiously left half way up slope. Time to give up. Loads of bilberries in area, loads of un-ripe raspberries but no spring. Possible to live off bilberries? Proper path quickly led us back through maze of trees to ridge entering Poljice. Lightning and thunder to S and W. Retrace steps on new plan of going back to Camp 2 SE through area we've not seen (summarise for future trip). Heading E tempting to try and dodge heavy clouds moving over our way! Heading to col NNE of 2283 (Sekira), Duboki Do looks rubbish. Mark hears rain/hail before it's on us. Distinctive drumming was heard from other side of D Do - weird. Just time to don jacket and bin liner skirt to cover shorts uppers (Toby's jacket more or less reached down as far. Trumped by Mark's full waterproof trousers). Hail begins! Amazing lightning and rolling thunder continues. Some strikes close. Toby banned from opening his lightning conductor/umbrella! I think I looked a bit of a nutjob once I had implemented my blue plastic skirt and red home made yettie gaiters. With bare legs showing Mark suggests I'm patriotic! Through col to reach undulations of "G. Polijica" which looks like an area worth prospecting. Lots of bits calling out to be looked at but with rain (giving up a little already) we were keen to get back. GPS tracking and naving to camp 2. Expo horses look pretty non-plussed at thunder. Back to camp to carcason, food, some gas canister antics - failed due to stove cylinders being almost empty. Oh, and my left boot sole fell off today during prospecting. Damn.

Wednesday 17/08 Steve

Objective: Check out the marked cave on the map Rutusina Pecina overlooking V. Rutulja. Then prospect the rocky area North.

The day started with an amazing view of low cloud in the valley, like being in an aeroplane. Left camera on a 10min/shot video record. Yum - apple chopped into muesli with mega allowance of milk powder. First day of crisp bread for lunch - Mark commented that the bag was very light. We tried to identify the dashed red path that leads to the cave. It's not visible at all. Also, the two lakes in Gornje Lokve are not properly represented on the map. In 2011, aligned perpendicular to main marked path, not parallel. GPS'd 2256. Many more low trees around 2284 than marked on the map. Map representation of scree/cliff hid peak on near side of entrance. Entrance itself had impressive rock bridge. Quite steep and rocky underneath so not brilliant for shelter. Looking down to the E there is good prospecting: Valoviti Do (déjà vu), V. Rutulja and some areas between and beyond. Next expo! Two ibex/ deer/goats were seen scarpering below. Struggled N, a bit too far W. Our view N (planned prospect) looked bollocks. I prospected NW along the N side of V Plece which looked OK(ish). GPS'd extremity. Below this ridge was trees and scree. We were all flagging (especially Mark - he was very unenthusiastic!). The descent into the area we'd planned to prospect was steep and scree. There may be areas we didn't see that could be worth a look. So, next objective: head over to prospect Suplijka entrance (on map), then check out Gornje Alisnica for a camp in 2012. S above 2251 col. First lunch. The crisp bread box was more air than crisp bread. I had also neglected to include sausage, so lunch wasn't adequate (glum). On the way to the entrance



York University Cave and Pothole Club Durmitor 2011 Expedition

we found an obvious crack in a low cliff blocking one side of a shakehole. (We had blinkered vision to other entrances but couldn't miss this). The crack looked poor but there was a draft coming from the scree at the bottom for variety, we had a dig at this for about 30 minutes. Soon became evident that it would be an undertaking. Not massive, but no time now. Through the day the valley mist had ebbed up and down. Clouds were building. Sometimes clouds above and below and to some sides. Storm brewing!

The marked cave is an impressive rock arch. Even has space for a tent. No ways on. En route (not really) to potential camp 3 (2012) we toured up to viewpoint at 2330. Hazy, but amazing views. Next down to Gornje Lokve bowl. I checked the water next to the path, the pool was quite brown with curious green bubbles on the surface. Some algae. No taddies. Can this be filtered? A long way from snow at Yf10! Mark and Toby checked out the 3 little pools to the N. Sounded worse! GPS'd area as camp 3. Between the main and the smaller pools there is space for about 5 tents. A few other spots nearby (Toby found quite a good spot for a few tents N).

Back to camp. Chocolate. Then collect more snow. There are a few small tent spots below Yf10. Poor. Yf10 is most reliable water, we plan to prospect camp spots in this area tomorrow. Evening meal was random. Bean feast with various packed flavourings, lamb stock x3, and garlic powder. With supplement pasta to normal 500g bag it was plenty (but Mark could still have done with more!)

Thursday 18/08 Mark

We woke up feeling good after the decent amount of food the night before. Another clear sunny morning made it hard to believe that ASAK had had 2 weeks of rain. The last of our apples mixed with a massive excess of milk powder bulked up our breakfasts and we were soon on our way to look at the unprospected SE corner of Gornje Alisnica. On our way we planned to look for a potential camp site for a larger group - camps 1 and 2 would be a real squeeze for anything over ~3 small tents and the area we had looked at yesterday (camp 3) would be fairly impractical if there were no water in the lakes or if it was undrinkable as was so far from any snow. The area we were walking across really didn't look promising (lots of small rocky mounds with scrub on top) but thankfully we found a clear area of about 10x20m with decent (for expo) pitches for about 4-5 tent spaces and about the same again which would be sloping. At 350m from Yf10 it isn't too far from snow either. When we reached the start of the prospecting area we started up the E side of the ridge coming down from Bezimini Vrh. It didn't take long to find a few things, some of which were worth another look to see what happens at the bottom (with rope) but none of which being brilliantly inspiring. By the time we got to the top of the ridge time was getting on as we'd marked 9 entrances (24-32). Time for a lunch break. We were a bit better off today since after yesterday's portions we'd decided to supplement lunch with some more sausage and chocolate. Yum.

It was pretty clear by this point (gone 2:30) that we weren't going to prospect the whole area, so we settled for prospecting the W side of the ridge we had come up. Before long Steve gave a shout to come over. "What have you got?" I asked. "From here it looks incredible," was the reply. I assumed it was yet another choked rift, but carried on over anyway. Turns out he wasn't being sarcastic. It was a large black hole in the floor (Yf33). It was hard to tell the depth - about 10-15m before rocks seem to land. It's worth pointing out that the rocks underground around here are quite dark so they may look deeper than they are. Our estimates are after peering down for a bit trying to get some night vision and throwing stones. As soon as we'd got back to our respective areas I immediately found something similar (Yf34). Toby came over saying he'd found one too, so after marking Yf34 we wondered over to where he'd come from. "Is this it?" I said, throwing rocks down another large drop. "Nope" came the reply. So we marked this one (Yf35) and the one Toby had found (Yf36). All these last 4 need rope to see what happens at the bottom. This is what prospecting should be like! We found one other decent entrance on our way down (Yf38), but by this time it was 7:50 so we needed to get back to camp. We rounded off the day with dehydrated meals and smash, before a rubbish reducing session and gas cylinder disposal. Fun fun fun! Probably my best day of the expo!



York University Cave and Pothole Club Durmitor 2011 Expedition

Friday 19/08

AM Mark

Knowing that we had to move camp down to nearer Zabljak in the afternoon, we needed to do something that wouldn't take up the whole day. After such a successful days prospecting yesterday it seemed like any prospecting would likely be a bit of a let down, so we decided to explore YF1 a bit more. By rigging on the opposite side than our first look down we reckoned we could get the end of the rope a fair bit lower.

After looking around for a bit wondering how such a massive shakehole could have so few places to rig from, we eventually chose somewhere so I kitted up while Steve got to work putting nuts in tiny little cracks, with 'marginal' being mentioned a worrying amount. Soon I was clipped into the rope and looked up to reassuringly(!) see Steve conspicuously stood on the sling I was hanging from. He said something along the lines of 'it's just to make sure', so I decided not to look and carried on down. A nice flat exposed slab looked like a great spot for a spit. Until about 5 minutes in when a nice big chunk fractured off the surface. Given the stressed position I was in I decided to carry on anyway, but it probably wasn't the best spit I've placed...

Next came the usual rope protector faff: Estimate positioning. Tie prussic knot. Abseil down. Do up rope protector. Carry on down. See it's in the wrong place. Try to reach prussic knot. Fail. Change on to jammers. Undo rope protector. Prussik over lip. Move prussic loop fractionally up. Reverse prussic down. Do up rope protector. Change back to descender. Notice rope protector still isn't quite right. Persuade yourself that it's probably ok. Carry on down...carefully!

The snow plug was reminiscent of X3 the year before. Constant mini-avalanches to keep you on your toes. Abseiling down, the ledge Toby had described was obvious, and this time the rope would reach. At that point there was a massive crash from the other side of the shakehole. It seemed kind of harsh for the others to be lobbing rocks down, however sure they were that they wouldn't hit me!

On the ledge it was disappointing to see that the gap between the wall and the snow was choked, but when I turned round there was a big (2m diameter) tunnel through the ice descending under the snow plug! Sadly I'd reached the end of the rope by this point, so I returned to the surface finding the rope protector miles up the rope and far from the sharp ledge it was supposed to be protecting me from. It also turned out that the huge crash earlier was actually down to a big cornice breaking off the snow plug!

Steve then popped down to see what the fuss was about, with an almost identical rope protector farce. However his drive to see what was next was evidently greater than mine as he unclipped from the rope and went part way down the tunnel, kicking steps into the snow until the floor turned to solid ice! This is certainly the most promising find, especially since we can't think of an explanation for the ice tunnel other than a draft.

PM Toby

Mark and Steve finished in Yf1 about lunch time. Yf1 is awesome and the main thing I'd come back to Durmitor for, so it was cool to finish with it. We were all amused that our most promising lead was the first entrance we had found! To be fair, Stevie Wonder would have had a job missing it, but it isn't obvious from most angles unless you know it's there. We are fairly confident it is unexplored due to the location, difficulty of descent and absence of spits. It's nice to find a shakehole you could fit a house in without somebody else's tag sprayed all over it.

Anyway, after lunch we got on with packing up camp. This took a while in the heat. We had to fill in our trenches and remove our camouflage. Finally we emptied the last of our water container to test the drainage tent under Mark's tent. Unfortunately the flood didn't even reach the channel and we were left none the wiser as to its effectiveness.

Our bags were not quite as much lighter as we had hoped but at least we only had one each on our backs. We each had 4L of water each for two days and for cooking that night and for



York University Cave and Pothole Club Durmitor 2011 Expedition

breakfast, which may have accounted for some of the unwelcome weight. Leaving camp and Yf1 behind us, though hopefully not for good, we made good time down through Donja Alisnica and past our first camp. We were half way down the steep path to Zminje Jez when Steve asked an innocent-sounding question about the whereabouts of the GPS. It quickly transpired that we were all fairly sure that somebody else had packed it. With a sense of inevitable doom we all made a token search of our bags but, of course, we had managed to leave the map case containing not only the GPS but 2 weeks worth of sketches, forms, maps, and write-ups that represented the entirety of our results, back at camp. It may come as no surprise to some that our most enormous and utterly farcical mishap had come on our very last day on the mountain. We had done the club proud, and felt that only 30 years of faff could have led to so monumental an error.

Lots were drawn and it was decided that Mark would go back for the GPS etc and Steve and I would check out the large cave entrance we had seen from the path on our last trip down. It was hard going - up a steep slope and through some gnarly trees. The cave was yet another huge arch, but smaller entrances on the right led to a honeycomb of passages. I went in with my helmet and light and climbed down into a small chamber with some cool ice formations. Getting out was fairly hard but with the aid of some piss-poor ice ledges I eventually managed it. There was an interesting series of avens above that I could not reach. Heading back towards the entrance I met Steve, *sans* helmet or light. Together we went up a slope and past more ice flows to a low crawl where the cold breeze of the cave was concentrated into a strong wind. Beyond this was a drop and more avens, but further progress was hampered by lack of rope, as well as the difficulty of caving in a pair when only one person has a light! It is conceivable that this cave has not been fully explored as there are no marks at the entrance or inside, but the entrance must be known about due to its size. It is worth a revisit to see where the draft comes from and for some sort of (better) survey. Back at the path we met Mark with our precious misplaced gear. It's a good job its absence was noticed when it was really. After a rest we set off again with our massive bags, past the pasture with the cabins where we had considered camping and on down the path for about another hour to the flat ground near Zminje Jez. There was a 4x4 tearing around on the path for some reason so we pushed on a bit and found a secluded spot. We only put up the 3 man tent to save unpacking Mark's undersized (and rammed) bag and finished the last of the dehydrated meals. We had to be in Zabljak early to ensure our seats on the bus, so we set alarms for 5:30 and retired, glad that we had brought another tent for the previous 2 weeks as it was rather a snug fit.

Saturday 20/08 Toby

Waking up at an abhorrent time was not actually as bad as I had imagined! It was nice and cool in the forest for our walk to Zabljak. The bags were not so bad as we had cooked with all our water and emptied our gas canisters. Steve smelled of gas all day due to making too large a hole in one and it flying around. Got to Zabljak in about an hour and gratefully dumped our bags at the bus station. For no good reason, the ticket office didn't open till 9, instead of the advertised 8, but when it finally did we had no trouble booking our seats. Then it was just a case of waiting till 2:30 for our bus. I dried out my socks and shoes and sprayed them liberally with deodorant, before turning the can on myself. I even had a foot wash, which was probably more trouble than it was worth. Lunch was bread and pate since we had spent all our money on the mixed grill the week before. Eventually the bus became available for business and we crammed our enormous bags in, before waving goodbye to Zabljak for another year.

The next 9 hours passed relatively without incident. The bus filled up reasonably, as it tends to do (probably worth booking in advance for a larger group). We stopped at a town beginning with P where buses from Podgorica and Bar were waiting, so this is where one would change if coming from these places. Might be best to check the actual name though. It *may* be Pljevlje. All very tired by the time we got to Belgrade about 11:30. All members of ASAK were still in Crete, so we were all alone in the unfamiliar city. After sitting around for a while learning the Serbian for getting a taxi to the airport, we managed to accost one and agree on the standard, absurd fee of €30 for the couple of miles drive out of town. Once at the airport we discovered



York University Cave and Pothole Club Durmitor 2011 Expedition

that my memory of the buses stopping about 11:30 was complete rubbish and they go on till about 1 (I think). In my defence I think I was told this by someone who sounded like they knew what they were talking about! I took a picture of the timetable but it didn't come out, though the picture of the bus route from the airport to the centre is more helpful and shows the name of the bus stop to get on at. This should be useful in future.

Rather than playing the million games of Carcason we had planned we all slept for a bit at the airport. Unlike last year, I caused no issues by trying to take knives through customs and things like that, so our journey back to the UK was not hugely exciting and we all slept for most of it. Finally back at Luton, we discovered that this is possibly the worst airport in the universe. The line for the border was several miles long, probably because half the booths were closed. Even the electronic passport gate was closed, which I was annoyed about as I had hoped to skip the queues and laugh at Mark and Steve with my super high-tech police-state passport. Once through, we headed off to get our hire car to drive back to York, but were informed by a helpful sign at the desk that we had to get on a bus and go somewhere else. Sighing at our country's lack of sense we went to the appropriate stop, got on the bus and ended up at some bizarre corner of the airport where the car rentals are for some reason located. We picked up a non-descript Skoda and started the long drive back to York. Or at least, long for some. I did that strange thing that comes naturally to one who has been travelling for 24 hours and fell asleep for several hours without actually realising, with the result that for a little while I wondered how my geography was so poor that I hadn't realised Luton was in Sheffield. Big thanks to Steve for driving! Anyhow, we got back to York at around midday (I think), and began the process of readjusting to normal life. Notable things include actual flowing water that comes out of taps, and land that is flat.

A day or two later I started writing up the log, which has now taken more than a fortnight and runs to over 7000 words, and has involved transcribing the scrawlings of three under-nourished idiots on a mountain in the middle of nowhere. Maybe it will be of use to future expos, but in any case, thanks to you for reading it, that makes it all worthwhile.

Probably.

Toby
September 6th, 2011

Conclusions

As a recce trip we can certainly call this visit a success. What we were most worried about was coming back with unanswered questions, but we found the answers to all our aims, even if they weren't exactly what we were hoping for:

- Was there anywhere to camp?

Camp 4 had just enough space for a smallish expo. We estimated it as being capable of fitting in enough tents for an absolute maximum of 15 or so people, along with some sort of mess tent set-up using a tarp.

- Was there any water?

Yes. But in one of the least useful forms it could be. It should be easier to collect with more preparation (tools, storage, filtration etc.) but it's still going to be no substitute for a spring.

- Are we prepared for running such a remote expo?



York University Cave and Pothole Club Durmitor 2011 Expedition

Just about, but then other clubs manage even more remote expos! With more frequent trips to Zabljak and more thought put into nutrition we could avoid some of the problems from this year. The walk up is long, though, and 30 kg is likely to be a minimum anyone will have to carry up at the start of the expo.

- Was there any possibility of finding caves?

Yes! YF1, YF9, YF10 and YF39 were all entered and left with passage continuing in some form or other, either due to lack of gear or time.

Our recce in 2011 will lay the groundwork for a larger and better equipped expedition in 2012. With the data we have gathered there will be enormous opportunity for pushing leads and further prospecting. Considering some of the entrances we found and were awed by, 2012 could be the best year in terms of discoveries in the history of YUCPC! This may be getting a little bit ahead of ourselves, but anyone who has ever been expedition caving knows how easy that is...

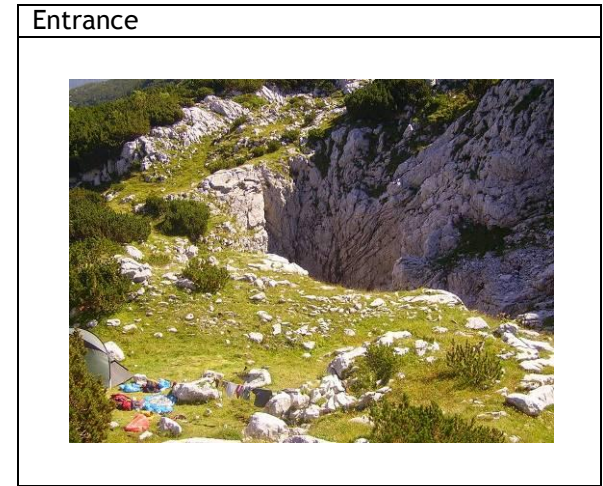
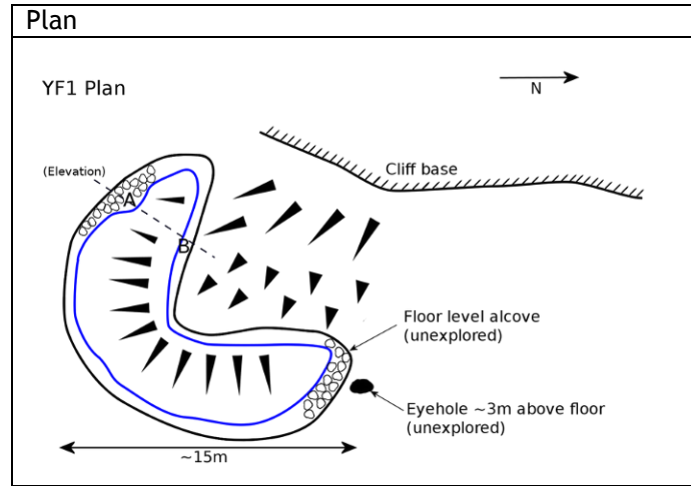
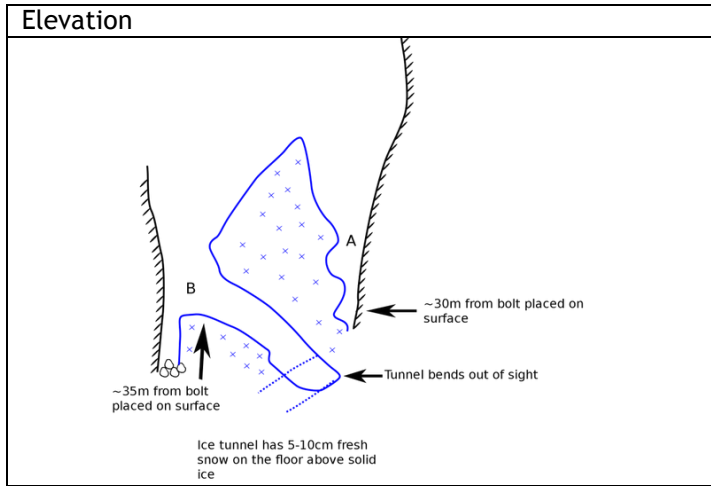
Our only regret is that some people may be put off by the remoteness and difficulty of the area. Unfortunately, with nowhere else on the cards, accessibility is simply something we will have to keep in mind for future expeditions, whether in Montenegro or elsewhere. On both counts: watch this space!

Appendix: Prospecting Data

GPS Reference:	YF1	Other Name:	-
Date:	08/08/2011	Marking:	YF1
Location:	N 43.143406	Altitude:	2079
	E 19.038189	Accuracy:	4
Personell:	TFB, SG, MTS	Draft:	Not Detectable
Length:	20	Depth:	>30

Directions to entrance
 Massive shakehole on SE side of col between Donja Alisnica and Gornja Alisnica

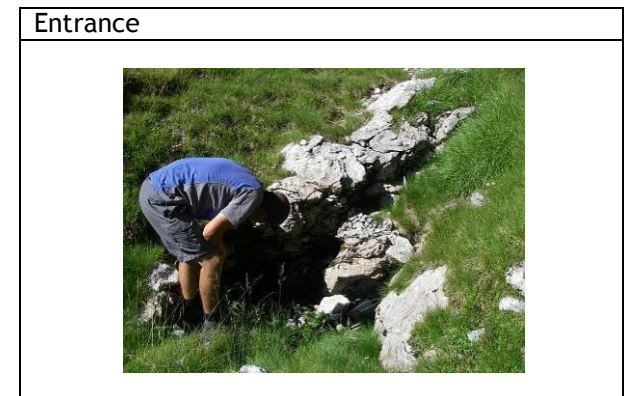
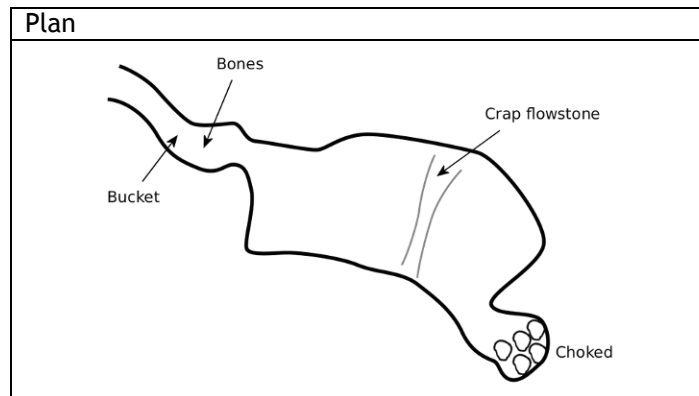
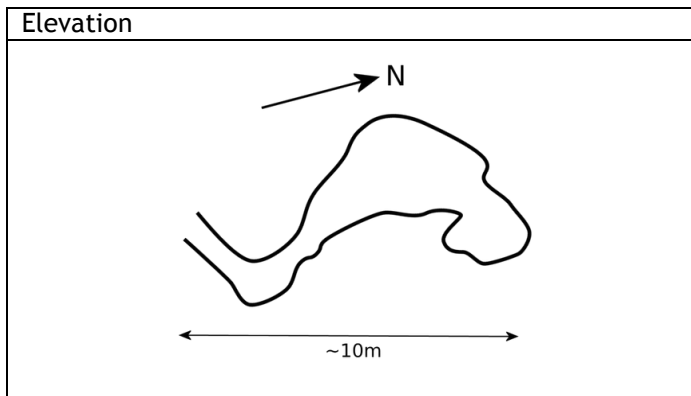
Way on/termination
 Reached descending ice tunnel below snow plug and ran out of rope. Tunnel appeared to continue around a corner below.



GPS Reference:	YF2	Other Name:	-
Date:	08/08/2011	Marking:	YF2 OX
Location:	N 43.150261	Altitude:	1943
	E 19.047754	Accuracy:	4
Personell:	TFB, SG, MTS	Draft:	Not Detectable
Length:	15	Depth:	6

Directions to entrance
 Just over col into Donja Alisnica on RHS of footpath

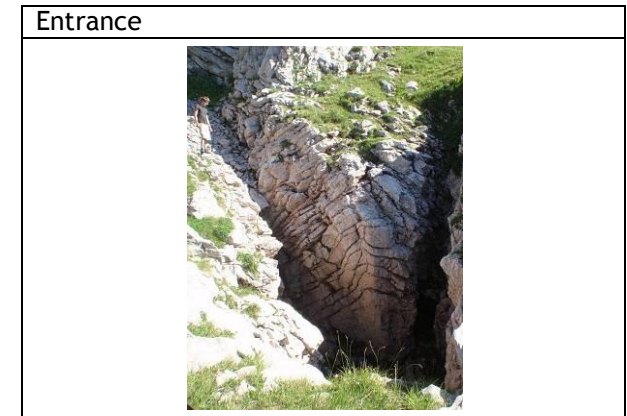
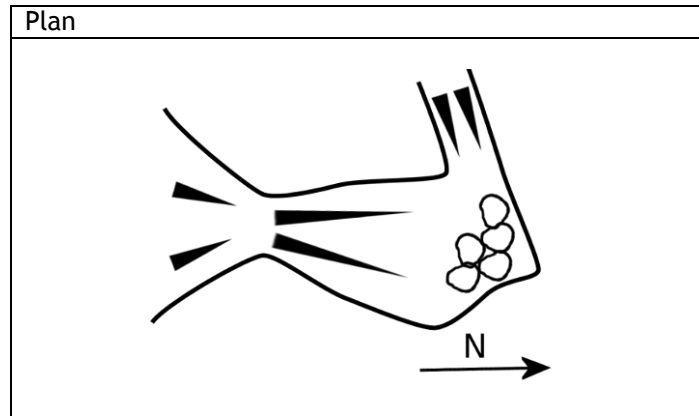
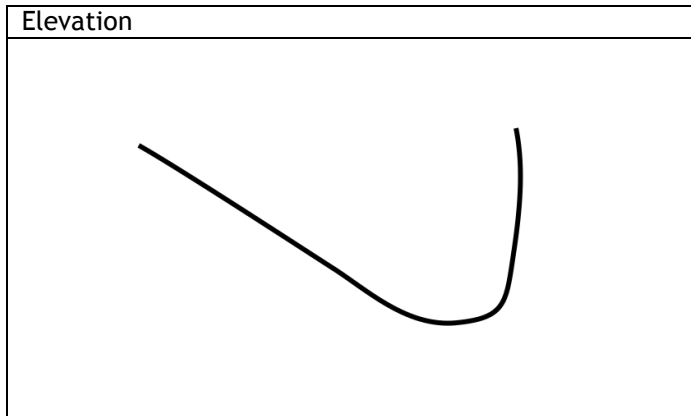
Way on/termination
 No Potential



GPS Reference:	YF3	Other Name:	-
Date:	08/08/2011	Marking:	YF3 OX
Location:	N 43.148769	Altitude:	1983
	E 19.049089	Accuracy:	4
Personell:	TFB, SG, MTS	Draft:	Not Detectable
Length:	-	Depth:	5

Directions to entrance
Up grass slope on LHS of path over col into Donja Alisnica

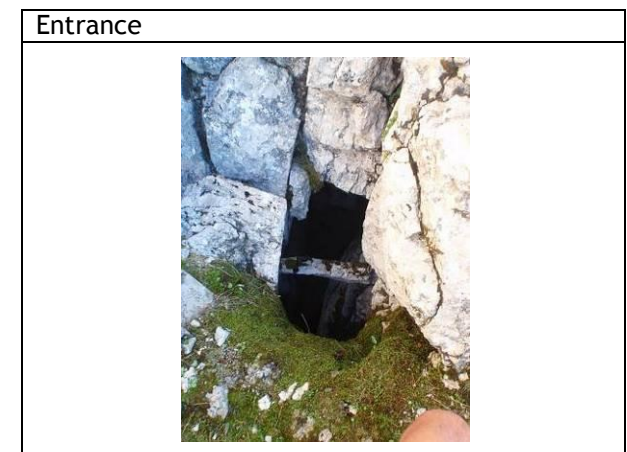
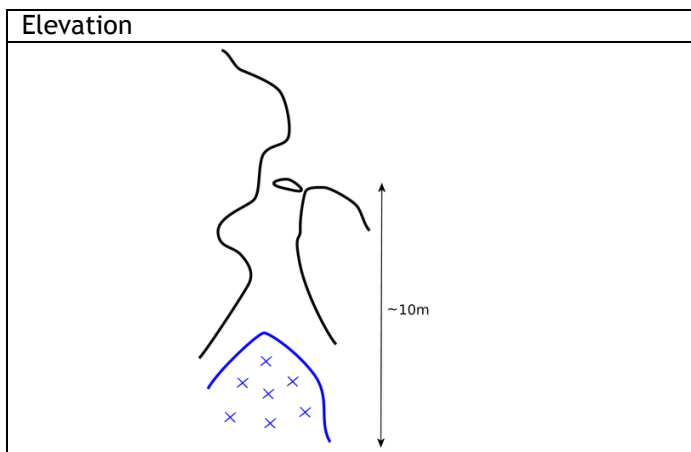
Way on/termination
No Potential. Choked.



GPS Reference:	YF4	Other Name:	-
Date:	08/08/2011	Marking:	YF4 O/
Location:	N 43.145653	Altitude:	2084
	E 19.044696	Accuracy:	4
Personell:	TFB, SG, MTS	Draft:	Slight
Length:	-	Depth:	10

Directions to entrance
Directly above 'Snow 2' half way along Donja Alisnica high on the S side

Way on/termination
Could see snow plug below. Requires rope to see if there is a continuation



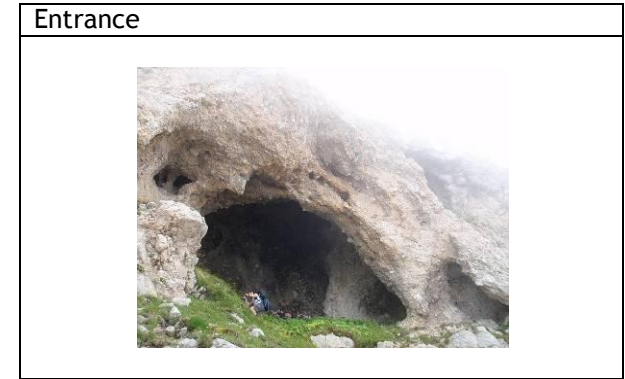
GPS Reference:	YF5	Other Name:	-
Date:	09/08/2011	Marking:	-
Location:	N 43.144883	Altitude:	2169
	E 19.044094	Accuracy:	4
Personell:	TFB, SG, MTS	Draft:	Not Detectable
Length:	15	Depth:	12

Directions to entrance
 Massive entrance at the top of the S side of Donja Alisnica

Way on/termination
 No Potential. A few small alcoves quickly close down

Elevation

Plan



GPS Reference:	YF6	Other Name:	-
Date:	09/08/2011	Marking:	YF6 O
Location:	N 43.142006	Altitude:	2085
	E 19.046028	Accuracy:	5
Personell:	TFB, SG, MTS	Draft:	Not Detectable
Length:	-	Depth:	5

Directions to entrance
 Thin rift in pavement just past scrub going from base of Kobilji Do bowl towards Zabljak

Way on/termination
 Couldn't get down. Solid floor at ~ -5m but may be a continuing rift. Hard to see if it continues

Elevation

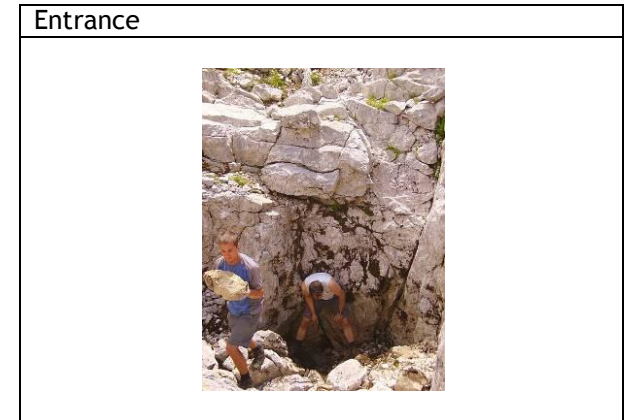
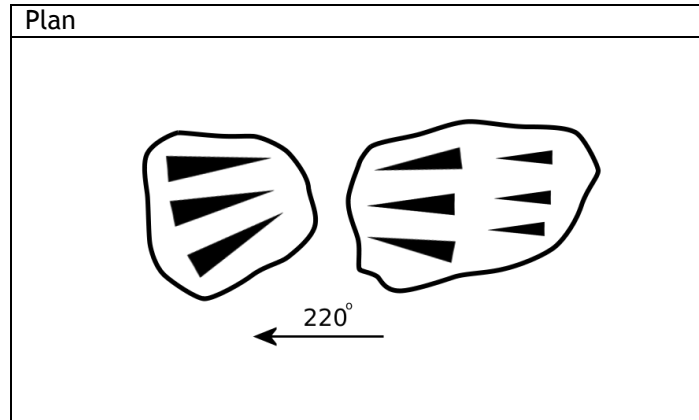
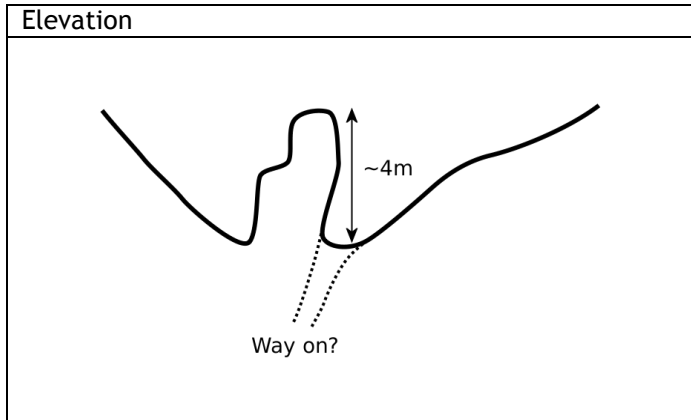
Plan

Entrance

GPS Reference:	YF7	Other Name:	-
Date:	09/08/2011	Marking:	YF7
Location:	N 43.141835	Altitude:	2060
	E 19.045181	Accuracy:	5
Personell:	TFB, SG, MTS	Draft:	Good
Length:	-	Depth:	-

Directions to entrance
 On E side of the base of the Kobilji Do bowl. 2 shakeholes adjacent to each other.

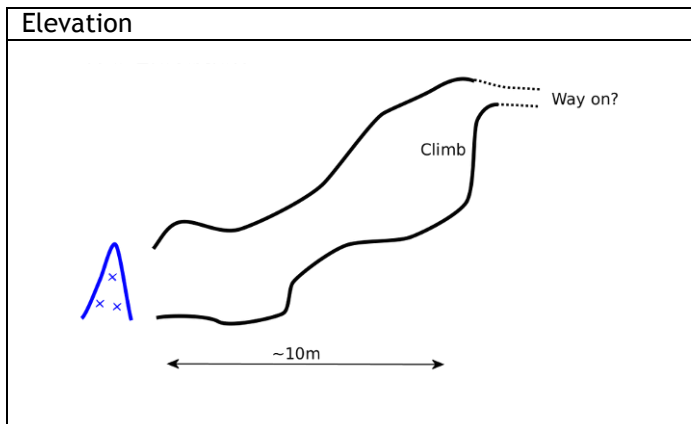
Way on/termination
 Good draft at base of both shake holes. Loose large blocks would need rope + slings and possibly rock-breaking gear.



GPS Reference:	YF8	Other Name:	-
Date:	09/08/2011	Marking:	YF8 O/
Location:	N 43.139978	Altitude:	2141
	E 19.046028	Accuracy:	5
Personell:	TFB, SG, MTS	Draft:	Not Detectable
Length:	15	Depth:	5

Directions to entrance
 Behind snow plug on S rim of Kobilji Do

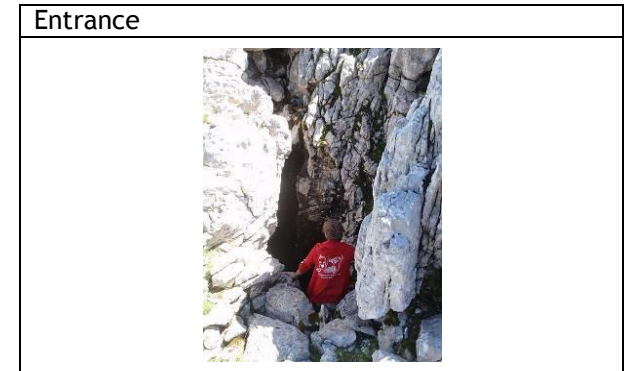
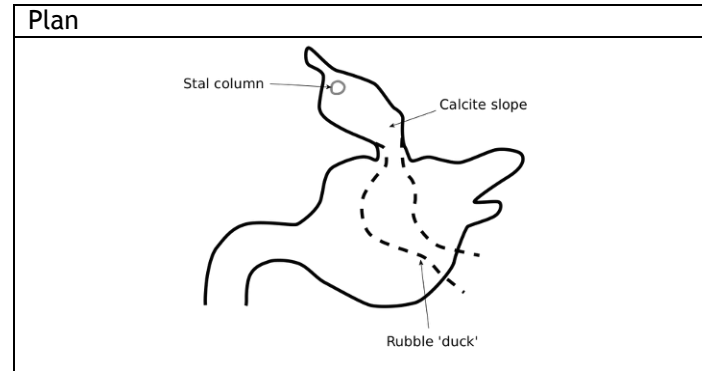
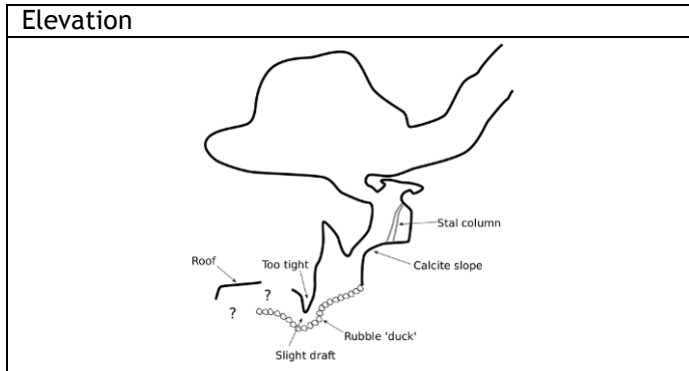
Way on/termination
 Possible climb up hard slippery climb. Looks v. small at top.



GPS Reference:	YF9	Other Name:	-
Date:	11/08/2011	Marking:	YF9 O/
Location:	N 43.141779	Altitude:	2146
	E 19.037476	Accuracy:	5
Personell:	TFB, SG, MTS	Draft:	Slight
Length:	25	Depth:	9

Directions to entrance
Walk up grassy slope above YF1 towards Gornja Alisnica. Where slope splits to right the entrance is hidden among boulders.

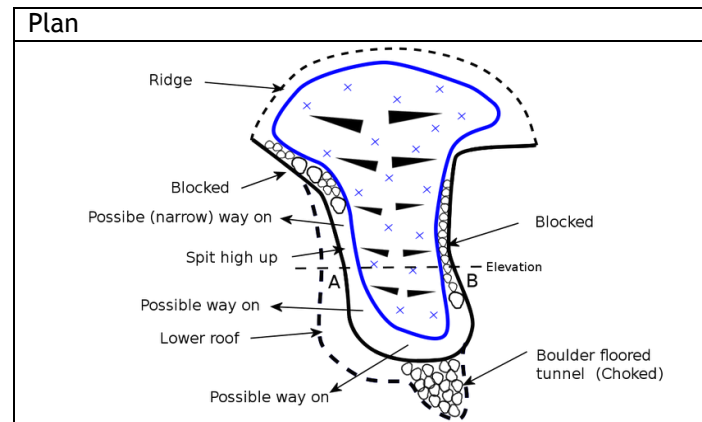
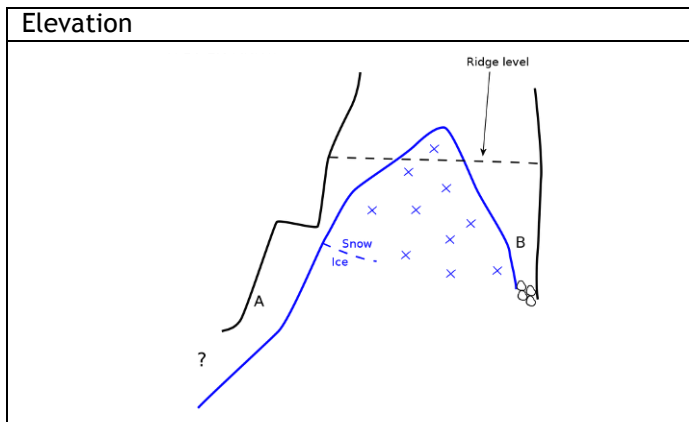
Way on/termination
Climb on left of chamber explored. Climb ~1m down calcite slope back underneath 1st chamber. Belay on big stal for handline (~5m rope). Stopped at 'rubble sump/duck'. Too risky and tight given circumstances. Top of 'duck' is a slot which you can see the next chamber through. Widest part is lower down (~80cm slope down) but is loose and needs some digging. Threw stones through. Not a big shaft as I'd hoped.



GPS Reference:	YF10	Other Name:	-
Date:	11/08/2011	Marking:	YF10
Location:	N 43.14076	Altitude:	2119
	E 19.036943	Accuracy:	4
Personell:	TFB, SG, MTS	Draft:	
Length:	10	Depth:	20

Directions to entrance
Below cliff on E side of Gornja Alisnica. Easy approach by traversing S from YF1

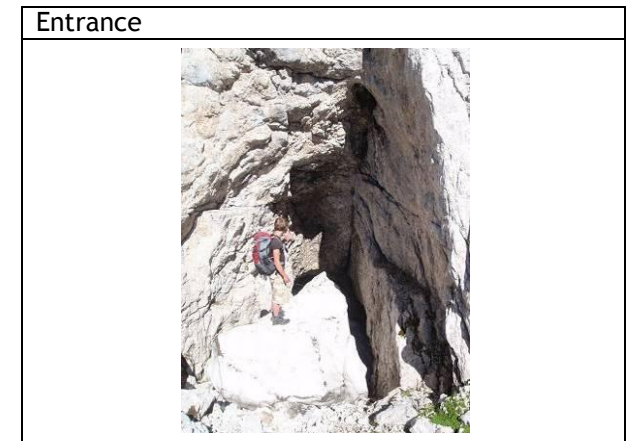
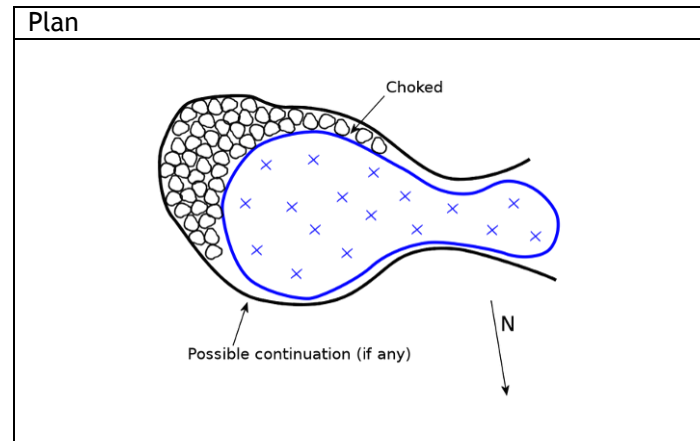
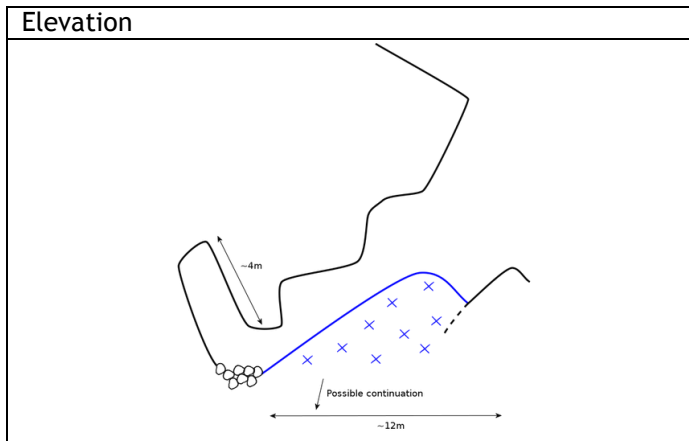
Way on/termination
Abseiled from high behind snow plug. Continued down between snow and wall before too much rope rub. Continued below.



GPS Reference:	YF11	Other Name:	-
Date:	11/08/2011	Marking:	
Location:	N 43.140527	Altitude:	2110
	E 19.037016	Accuracy:	5
Personell:	TFB, SG, MTS	Draft:	Not Detectable
Length:	12	Depth:	4

Directions to entrance
Just S of YF10

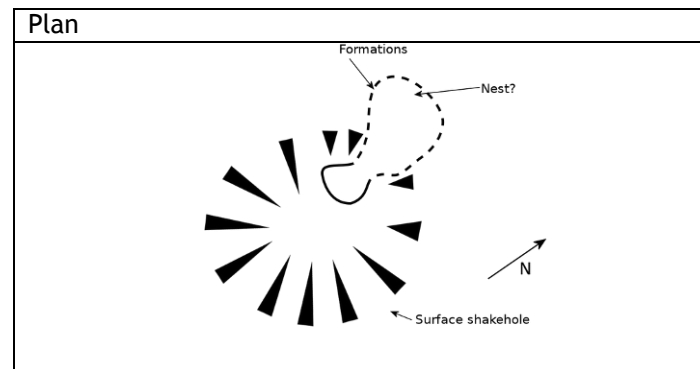
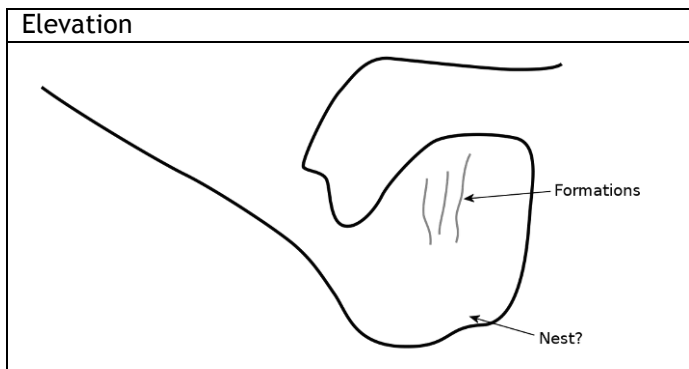
Way on/termination
Ice slope at base of snow plug was too tight to the wall (this year). Worth a visit another year if snow levels are low and you're in the area with gear.



GPS Reference:	YF12	Other Name:	-
Date:	11/08/2011	Marking:	YF12 OX
Location:	N 43.144874	Altitude:	2003
	E 19.039441	Accuracy:	5
Personell:	TFB, SG, MTS	Draft:	Not detectable
Length:	9	Depth:	3

Directions to entrance
Directly below 'Snow 1'

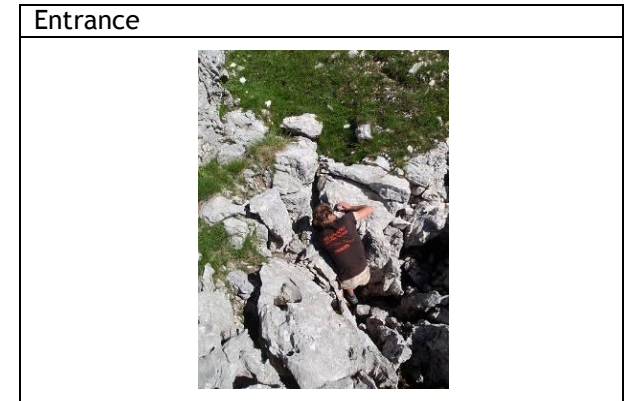
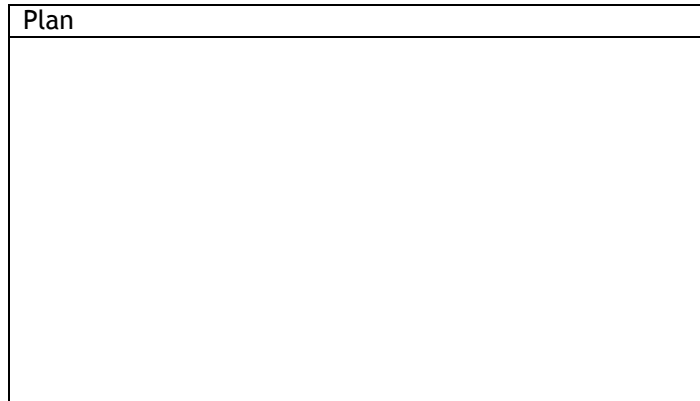
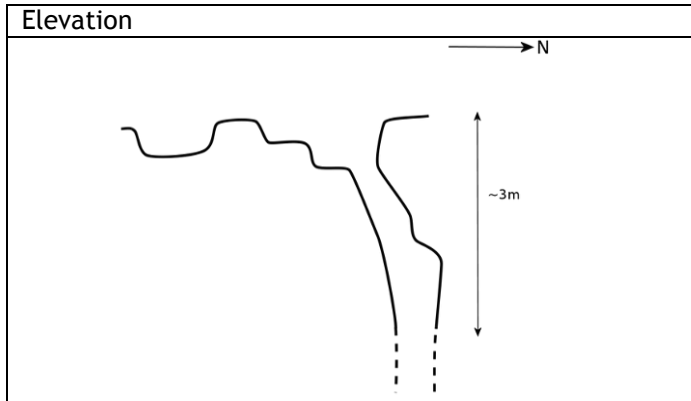
Way on/termination
Walls are solid. Floor is broken stones with gaps in various places, but no draft or promising stone clatters. Curious nest type thing.



GPS Reference:	YF13	Other Name:	-
Date:	12/08/2011	Marking:	YF13
Location:	N 43.153161	Altitude:	1999
	E 19.045488	Accuracy:	3
Personell:	TFB, SG, MTS	Draft:	Not Detectable
Length:	-	Depth:	4

Directions to entrance
 On RHS heading N from lakes in Donja Alisnica. Northerly most hole in a ~10m line of rifts.

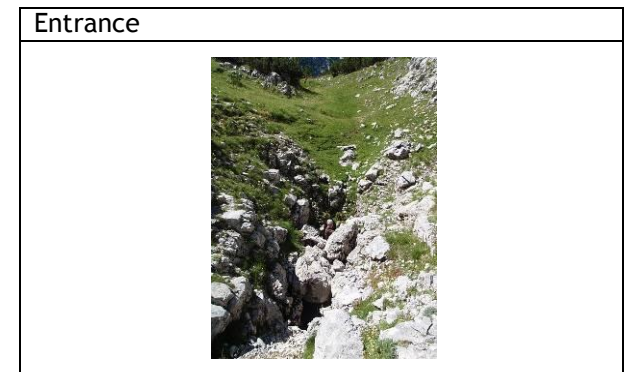
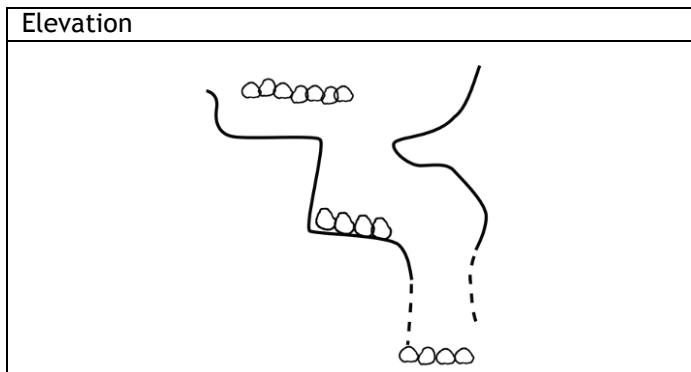
Way on/termination
 Narrow rift (possibly needs widening, certainly needs oversuit!). Rocks fall for ~4m. Can't see the bottom from surface. Probably bottoms out quickly.



GPS Reference:	YF14	Other Name:	-
Date:	12/08/2011	Marking:	YF14
Location:	N 43.153188	Altitude:	1997
	E 19.044634	Accuracy:	4
Personell:	TFB, SG, MTS	Draft:	Not detectable
Length:	4	Depth:	5

Directions to entrance
 Near YF13. N of water pools.

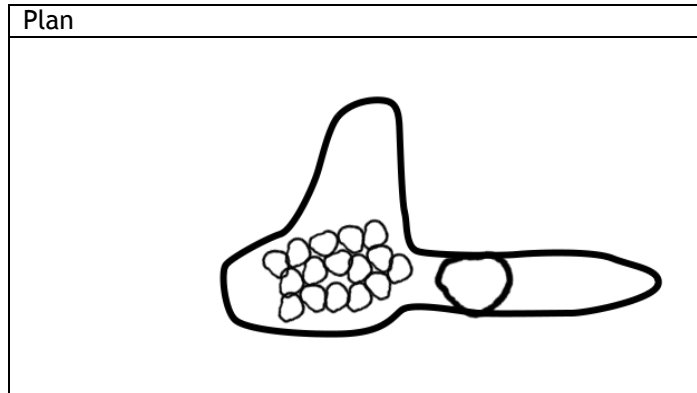
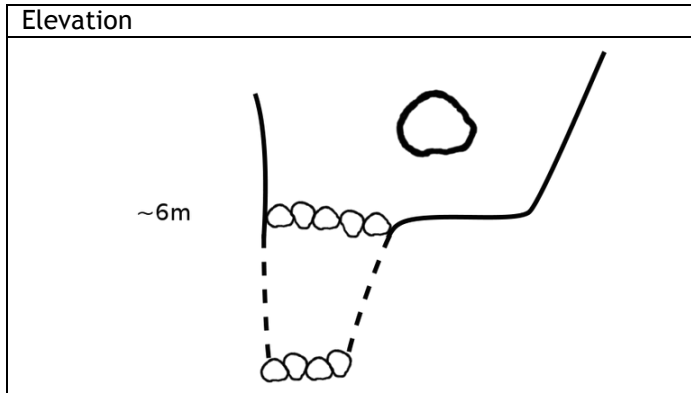
Way on/termination
 Not descended. Rope required. False floor, drop, then another drop in the corner. Bottom probably beyond this as rocks stop here.



GPS Reference:	YF15	Other Name:	-
Date:	12/08/2011	Marking:	YF15 O/
Location:	N 43.153528	Altitude:	2037
	E 19.042976	Accuracy:	3
Personell:	TFB, SG, MTS	Draft:	Slight
Length:	4	Depth:	6

Directions to entrance
Up rocky gully (260 degrees) from choked up bowl.

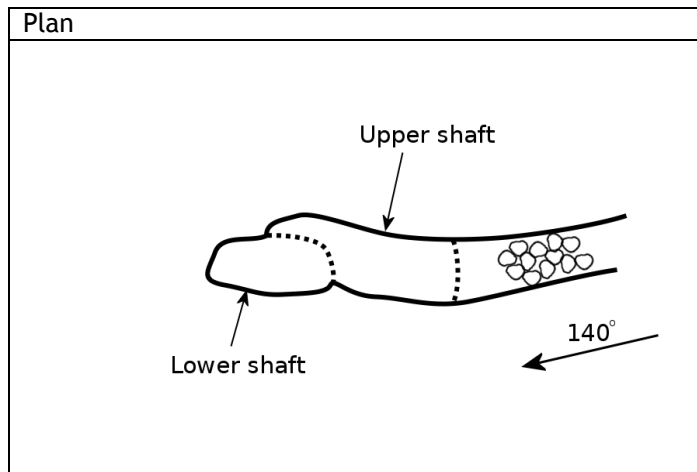
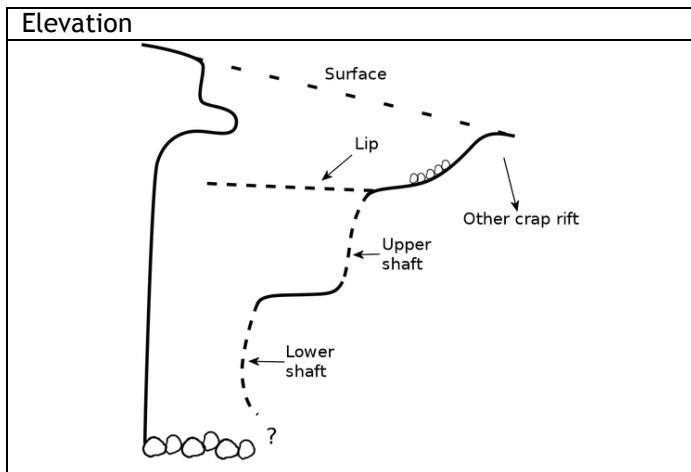
Way on/termination
Got to false floor ~2m above what looks like a rubble floor but didn't/couldn't descend. Unlikely to be a continuation.



GPS Reference:	YF16	Other Name:	-
Date:	12/08/2011	Marking:	YF16 O/
Location:	N 43.154632	Altitude:	2062
	E 19.043225	Accuracy:	5
Personell:	TFB, SG, MTS	Draft:	Not detectable
Length:	4	Depth:	11

Directions to entrance
Rift on eastern edge of bowl N of Teleci Do. Rift runs at ~140 degrees.

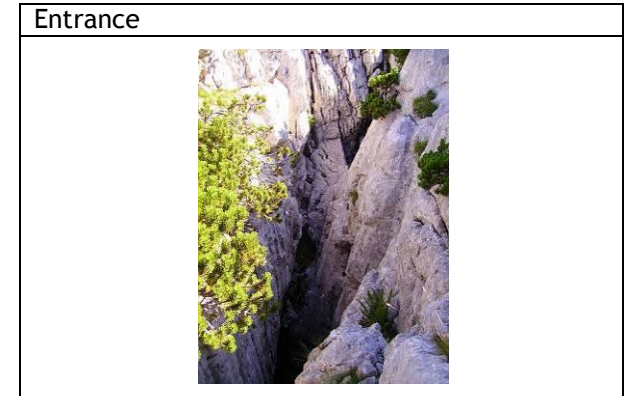
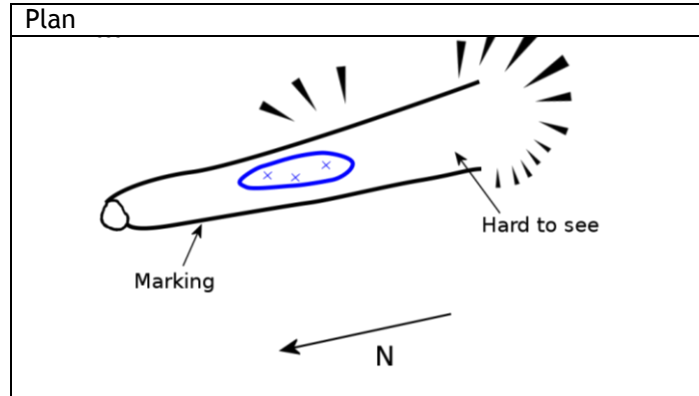
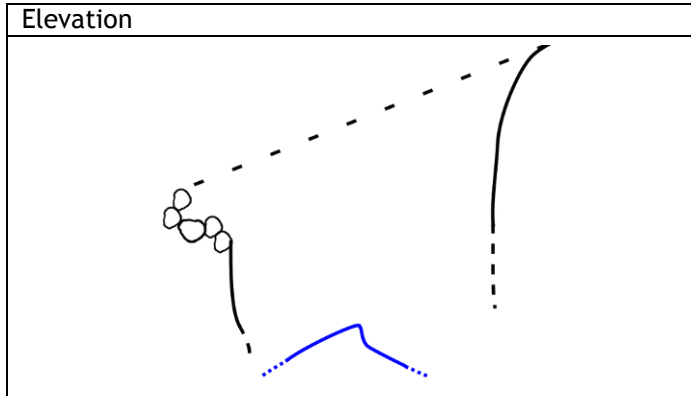
Way on/termination
Rift with boulder floor. Possible route on underneath entrance. May find nail varnish pot at bottom...oops.



GPS Reference:	YF17	Other Name:	-
Date:	12/08/2011	Marking:	YF17 O
Location:	N 43.155266	Altitude:	2087
	E 19.042043	Accuracy:	5
Personell:	TFB, SG, MTS	Draft:	Not detectable
Length:	6	Depth:	12

Directions to entrance
 Among shit-loads of mini trees. Next to similar large gash in the hill. Following down from rocky, steep sided gully, descending to the N.

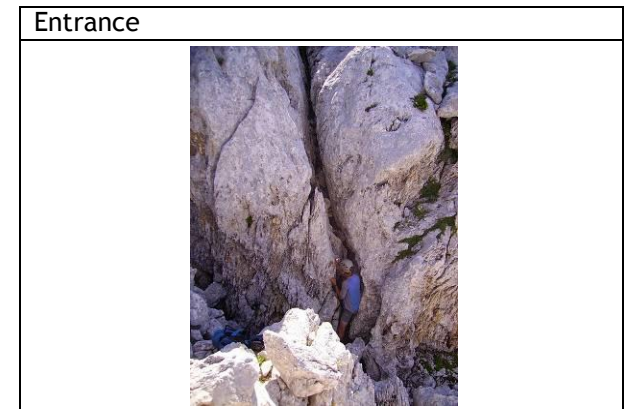
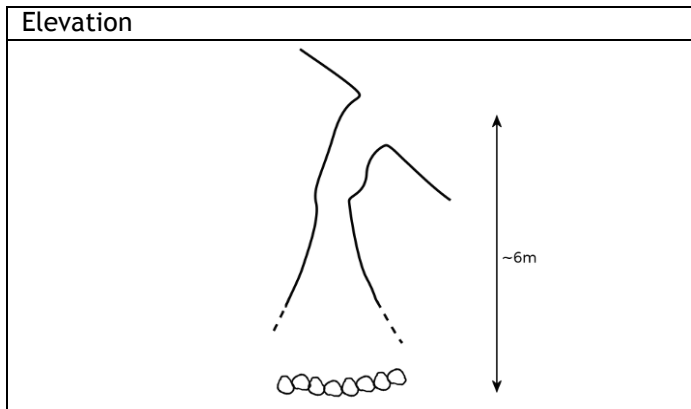
Way on/termination
 Needs rope.



GPS Reference:	YF18	Other Name:	-
Date:	12/08/2011	Marking:	YF18 O/
Location:	N 43.155387	Altitude:	2073
	E 19.042454	Accuracy:	5
Personell:	TFB, SG, MTS	Draft:	Not detectable
Length:	3	Depth:	6

Directions to entrance
 Just down slope below YF17. N of bowl N of Teleci Do. In side of massive depression.

Way on/termination
 Can see boulder floor but can't see walls so may be a continuation but improbable. Needs rope.



GPS Reference:	YF19	Other Name:	-
----------------	------	-------------	---

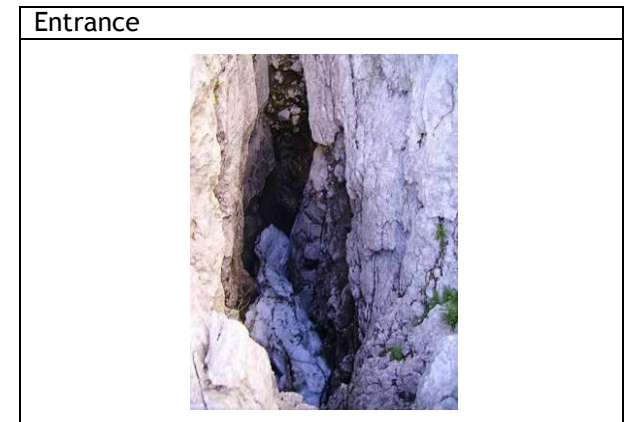
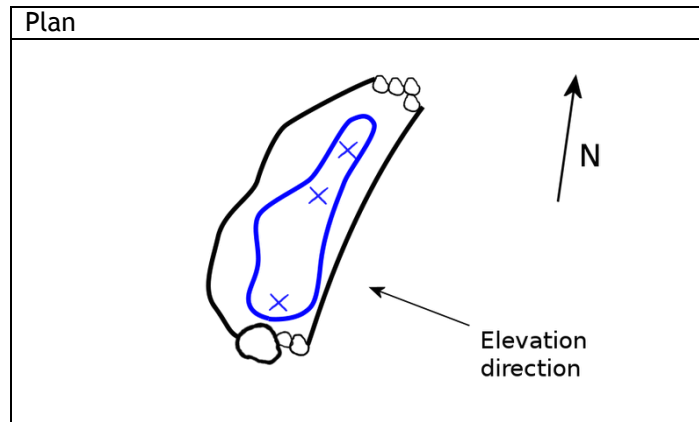
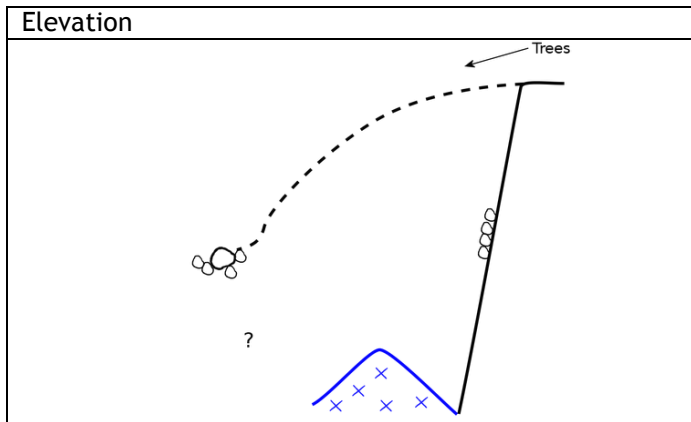
Directions to entrance

Way on/termination

Date:	12/08/2011	Marking:	YF19
Location:	N 43.15563	Altitude:	2062
	E 19.043032	Accuracy:	4
Personell:	TFB, SG, MTS	Draft:	Not detectable
Length:	5	Depth:	7

Bottom of short gully running N

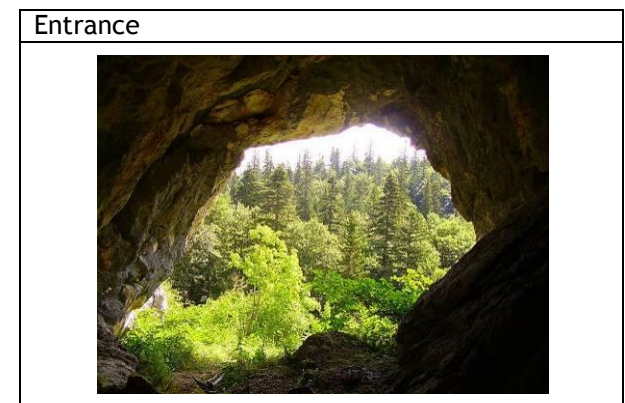
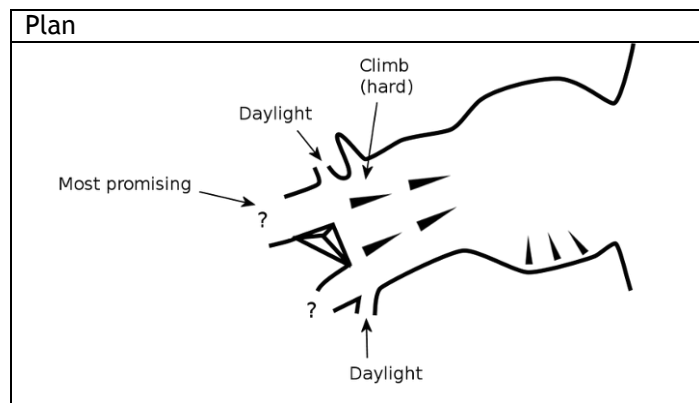
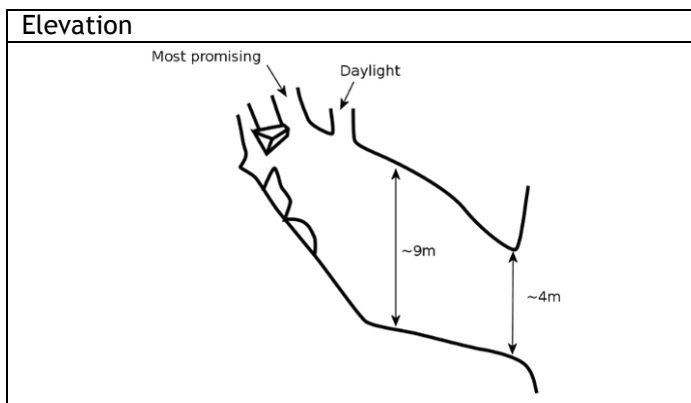
Drop (needs rope) on to snow plug. Doesn't look brilliant



GPS Reference:	YF20	Other Name:	Jelovacka Pecina
Date:	14/08/2011	Marking:	
Location:	N 43.153295	Altitude:	1739
	E 19.05278	Accuracy:	4
Personell:	TFB, SG, MTS	Draft:	Not detectable
Length:	15	Depth:	12

Directions to entrance
Obvious large entrance on RHS of path below steep section walking from Zabljak to Donja Alisnica. Already marked with 'SBB 12' or '5BB 72'. Can't tell which.

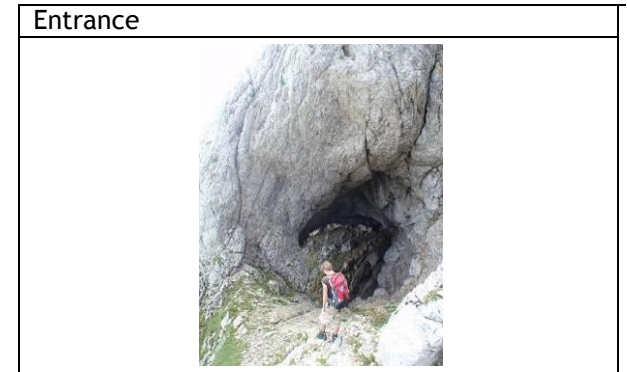
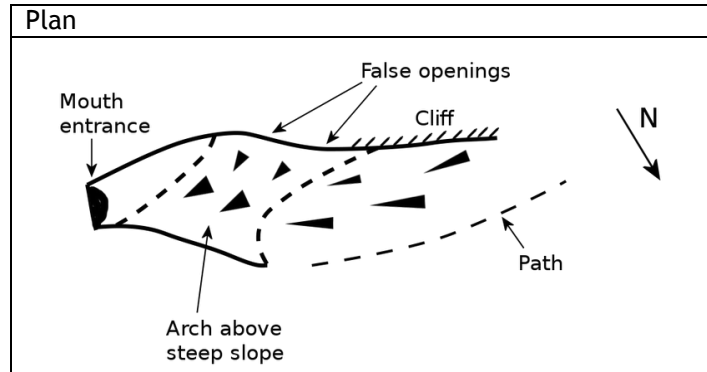
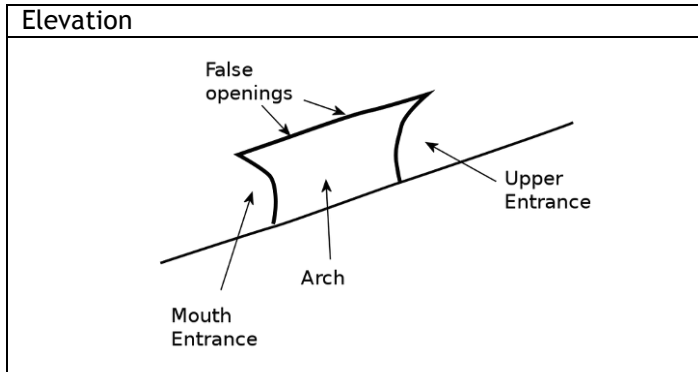
Way on/termination
2 holes high up at the back. May need to be climbed (or bolt climbed) to reach them. Also 2 holes to daylight.



GPS Reference:	YF21	Other Name:	Rutusina Pecina
Date:	17/08/2011	Marking:	
Location:	N 43.155506	Altitude:	2236
	E 19.027133	Accuracy:	4
Personell:	TFB, SG, MTS	Draft:	Not detectable
Length:	20	Depth:	10

Directions to entrance
E side of col S of 2284 overlooking Skrapa. Marked on map

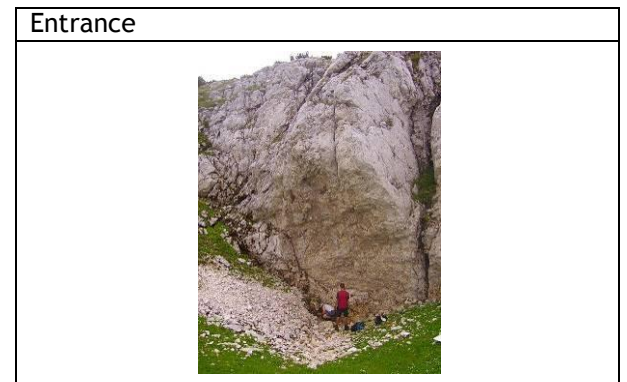
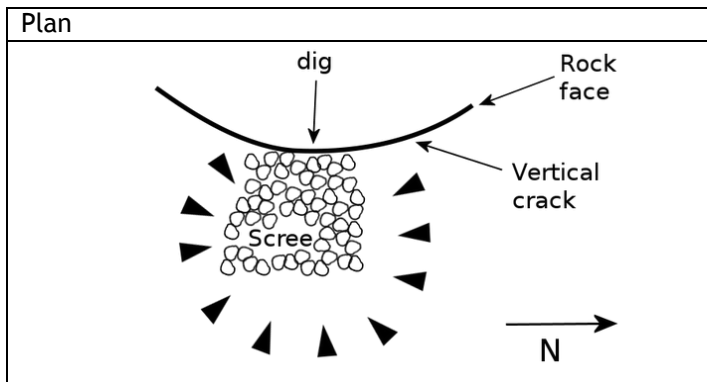
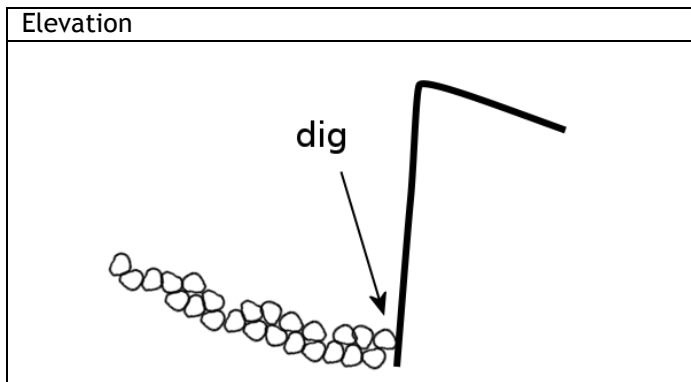
Way on/termination
Big archway open at both ends. No ways on in archway. 2 holes high up on N side look as if they have poor potential.



GPS Reference:	YF22	Other Name:	-
Date:	17/08/2011	Marking:	YF22
Location:	N 43.156539	Altitude:	2208
	E 19.021413	Accuracy:	4
Personell:	TFB, SG, MTS	Draft:	Slight
Length:	0	Depth:	0

Directions to entrance
WSW of 2284, about 300-400m away. Dig at base of large flat rock face

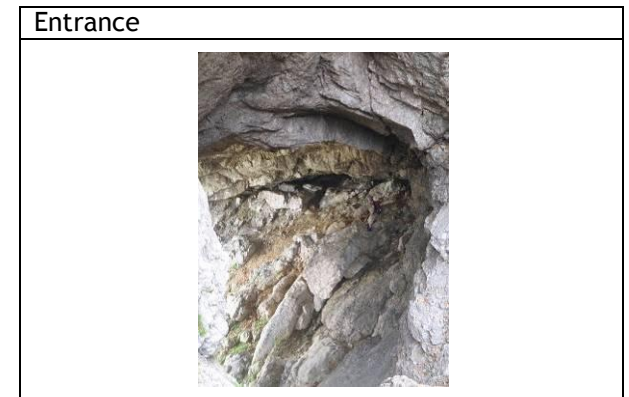
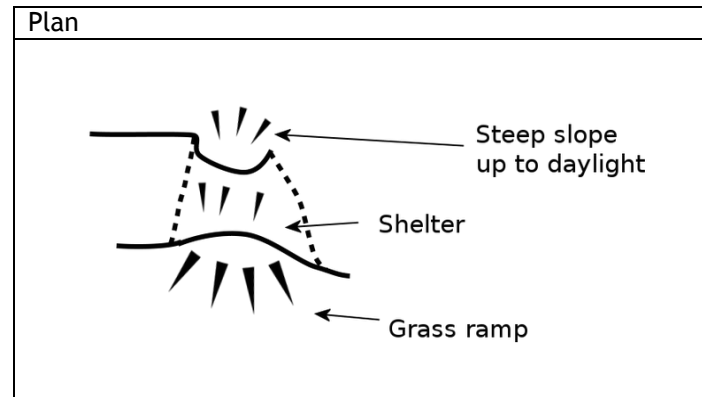
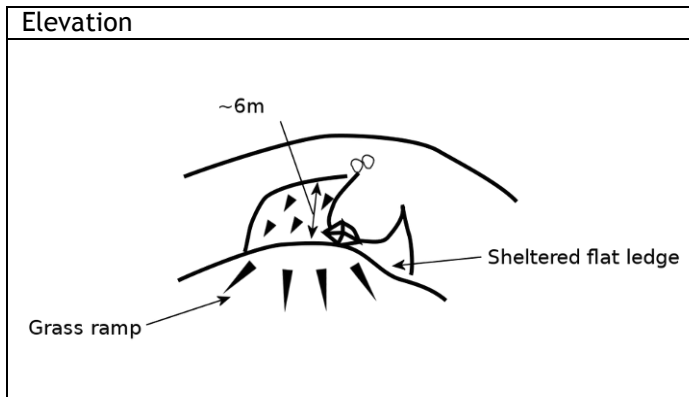
Way on/termination
Drafting through boulders. Would be a big dig.



GPS Reference:	YF23	Other Name:	Supljica
Date:	17/08/2011	Marking:	
Location:	N 43.147691	Altitude:	2306
	E 19.021976	Accuracy:	5
Personell:	TFB, SG, MTS	Draft:	Not Detectable
Length:	10	Depth:	6

Directions to entrance
Facing S over col below. Big rock bridge at top of steep slope.

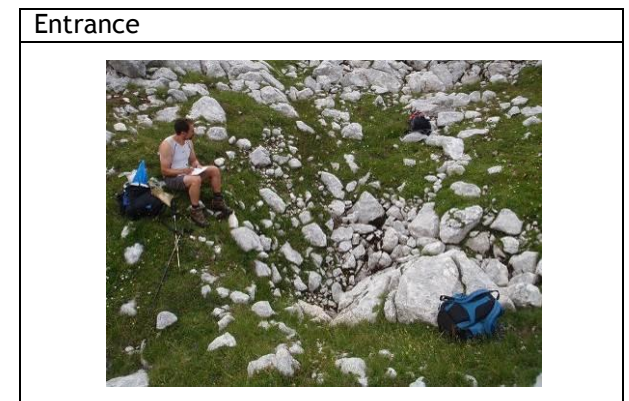
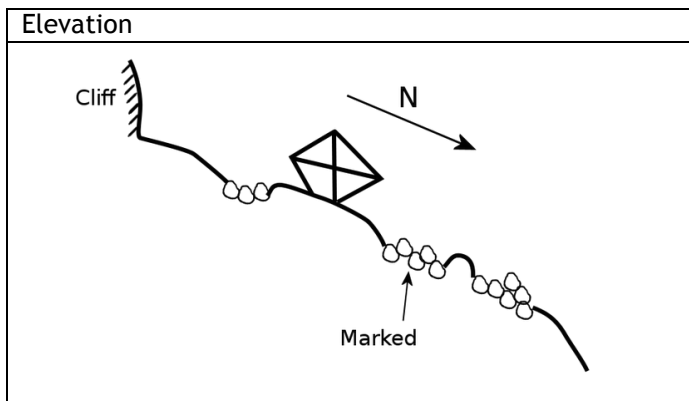
Way on/termination
No leads.



GPS Reference:	YF24	Other Name:	-
Date:	18/08/2011	Marking:	YF24
Location:	N 43.140218	Altitude:	2066
	E 19.030616	Accuracy:	4
Personell:	TFB, SG, MTS	Draft:	Slight
Length:	0	Depth:	0

Directions to entrance
Towards bottom of ridge running down SSE side of Gornja Alisnica

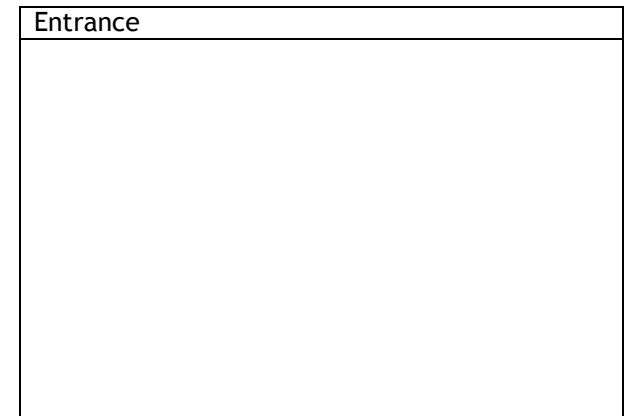
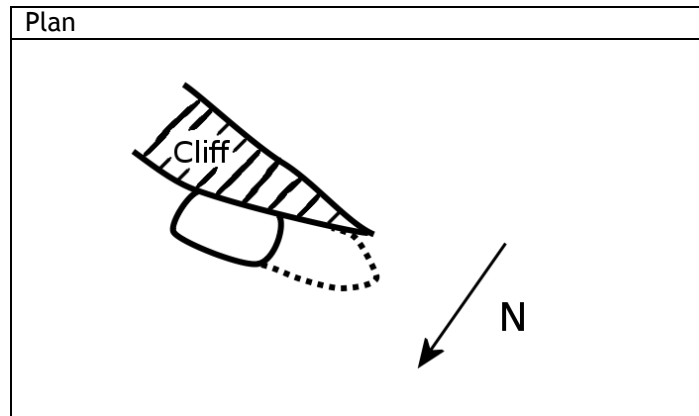
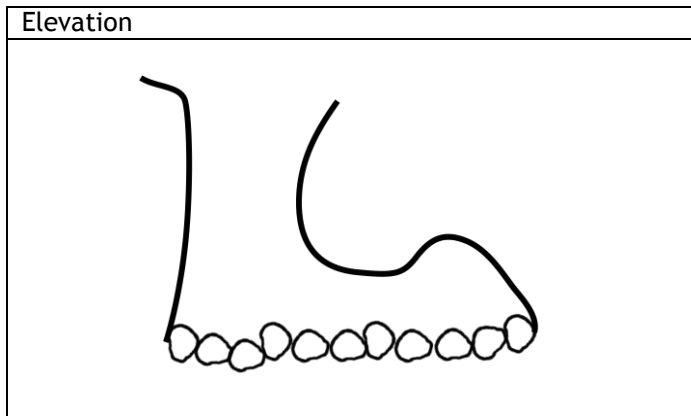
Way on/termination
Line of 3 shake holes on a descending (N) slope, topped by 3m cliff. Middle hole marked and drafts most strongly. Potential dig.



GPS Reference:	YF25	Other Name:	-
Date:	18/08/2011	Marking:	YF25
Location:	N 43.13877	Altitude:	2128
	E 19.030994	Accuracy:	9
Personell:	TFB, SG, MTS	Draft:	Slight
Length:	3	Depth:	4

Directions to entrance
N facing crack at top of diagonal (low) cliff in semi-bowl.

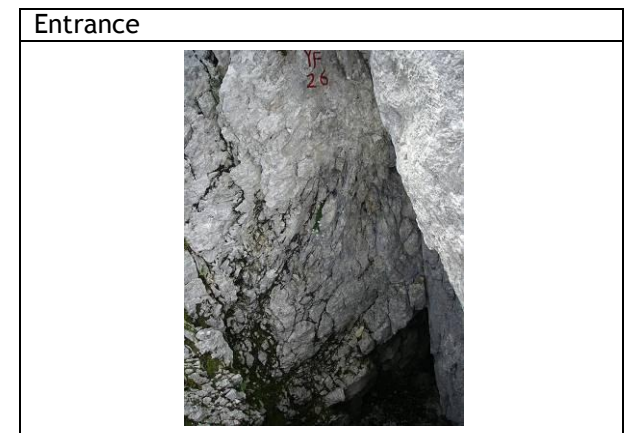
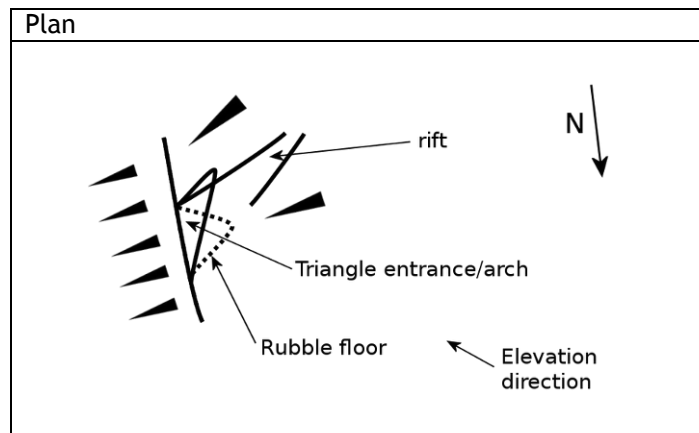
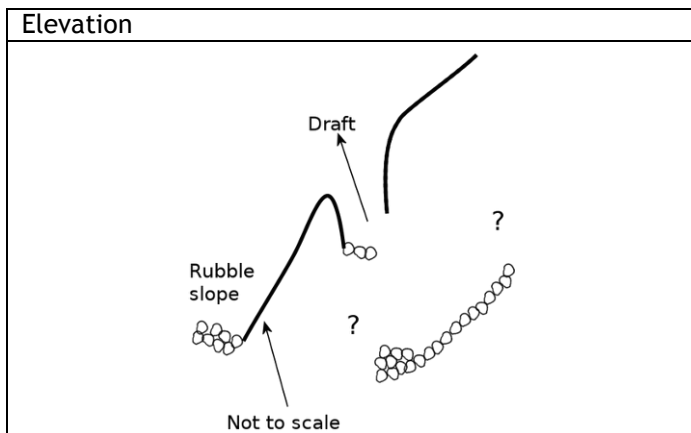
Way on/termination
Slight draft from boulder floor. Gaps between rocks of easy digging size, but doesn't look worth it.



GPS Reference:	YF26	Other Name:	-
Date:	18/08/2011	Marking:	YF26
Location:	N 43.138085	Altitude:	2111
	E 19.031387	Accuracy:	4
Personell:	TFB, SG, MTS	Draft:	Good
Length:	5	Depth:	10

Directions to entrance
NE facing side of rocky/rounded ridge up SW side of Gornja Alisnica, ~15m above massive rubble slope.

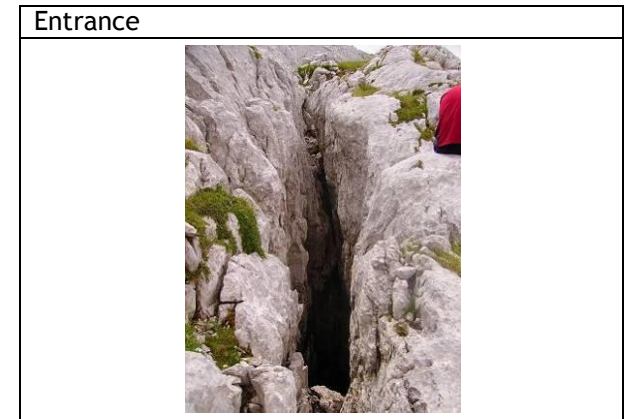
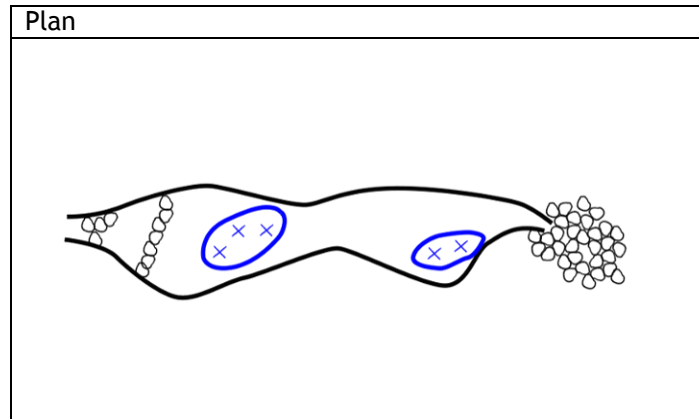
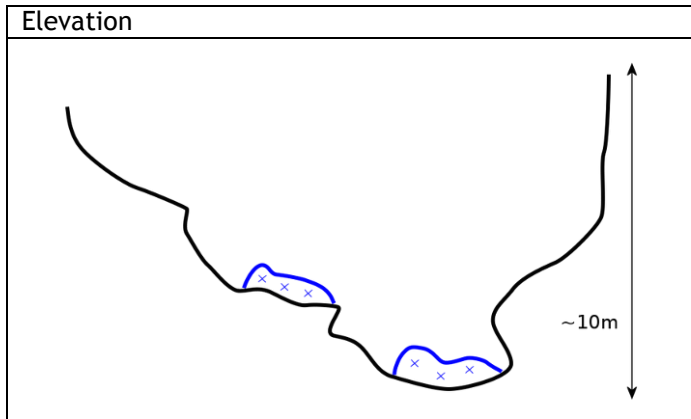
Way on/termination
2 or 3 m climb to boulder floor. Rift heads SW into hillside but tapers to nothing at the top. Rocks need digging out to access rift. Rope too. Worth revisiting.



GPS Reference:	YF27	Other Name:	-
Date:	18/08/2011	Marking:	YF27 OX
Location:	N 43.137839	Altitude:	2159
	E 19.030648	Accuracy:	4
Personell:	TFB, SG, MTS	Draft:	Not detectable
Length:	6	Depth:	10

Directions to entrance
Just N of high point on ridge running down centre of Gornja Alisnica. Large rift running -EW.

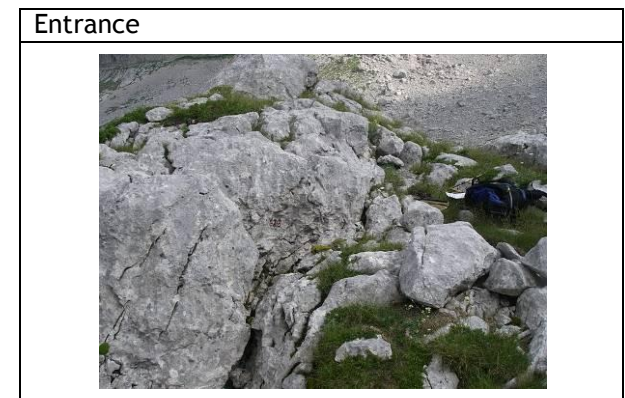
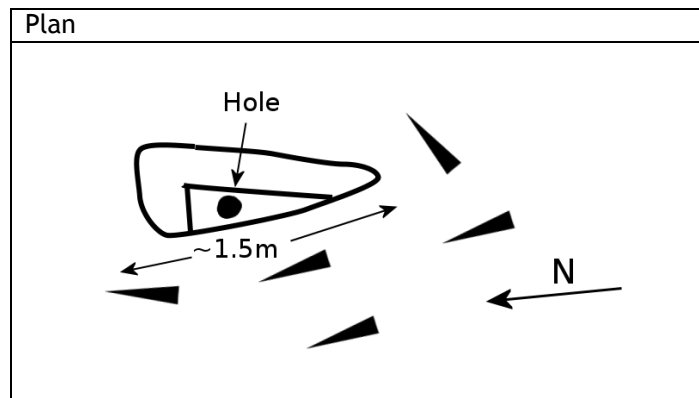
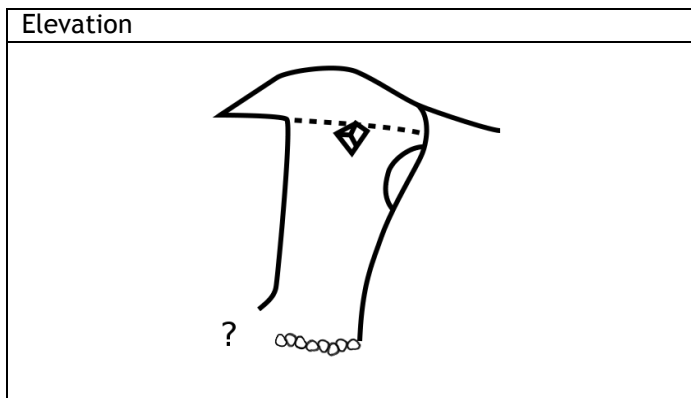
Way on/termination
Ends at rubble floor below snow. No way on.



GPS Reference:	YF28	Other Name:	-
Date:	18/08/2011	Marking:	YF28
Location:	N 43.137028	Altitude:	2164
	E 19.031433	Accuracy:	4
Personell:	TFB, SG, MTS	Draft:	Not detectable
Length:	3	Depth:	7

Directions to entrance
On left side of rocky ridge heading SE up right side of big rubble funnel to col.

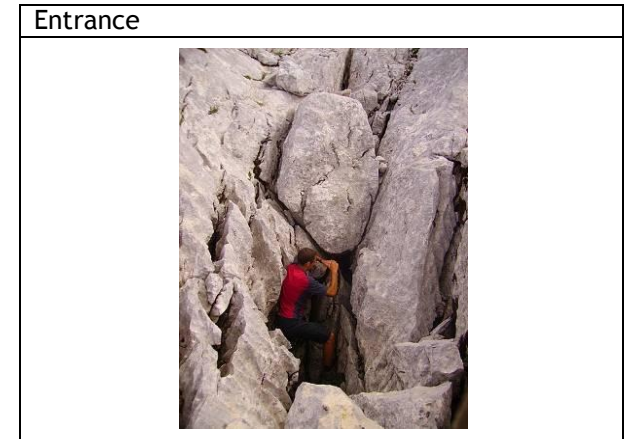
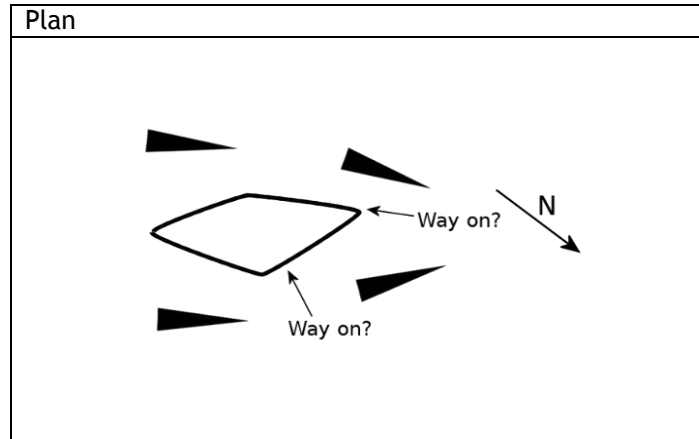
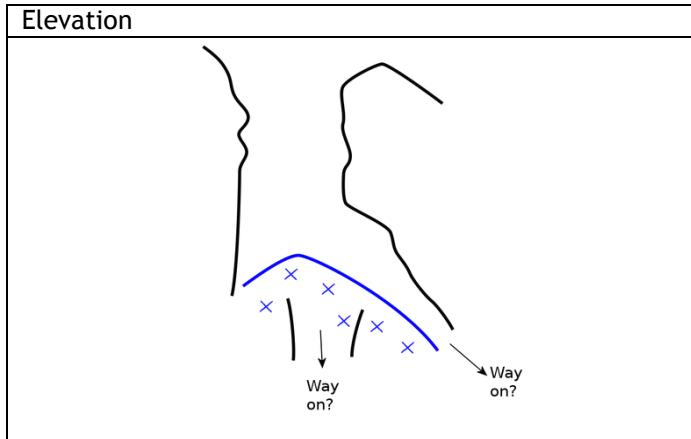
Way on/termination
Need rope to descend. Rubble floor. Quite tight but appears to widen.



GPS Reference:	YF29	Other Name:	-
Date:	18/08/2011	Marking:	YF29
Location:	N 43.137147	Altitude:	2173
	E 19.030331	Accuracy:	4
Personell:	TFB, SG, MTS	Draft:	Not detectable
Length:	3	Depth:	8

Directions to entrance
 At lower end of stone slope with vertical cracks (NW direction). Further up are other promising cracks/depressions.

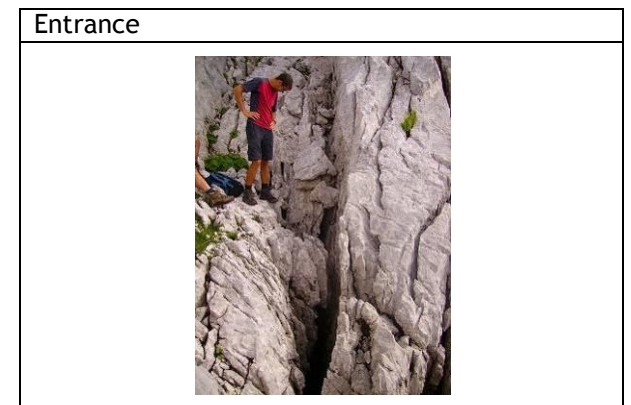
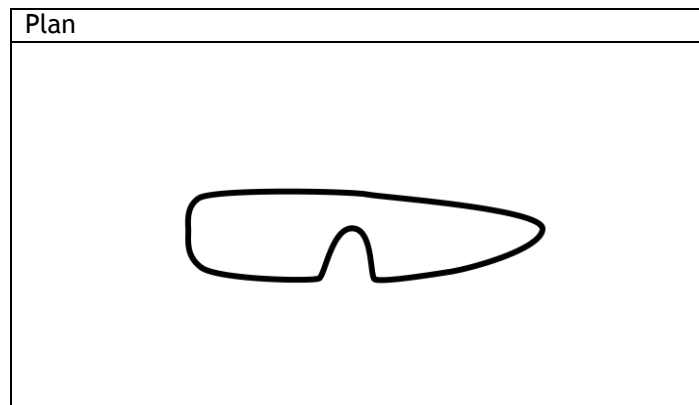
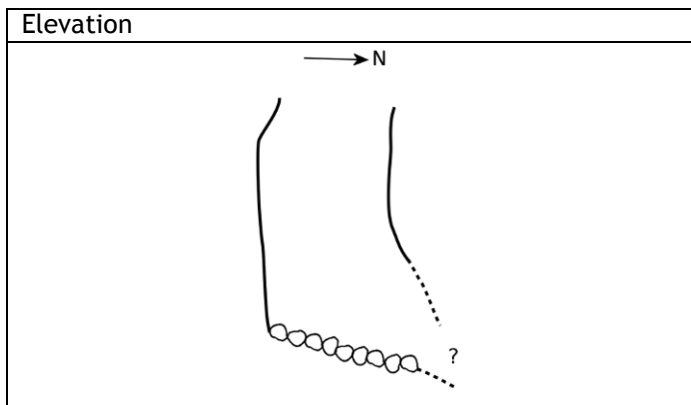
Way on/termination
 ~4m down to snow plug. Slot heading NE and rift continuing NW are possibilities. Both are quite tight and potentially blocked with snow. Overall, not promising.



GPS Reference:	YF30	Other Name:	-
Date:	18/08/2011	Marking:	YF30
Location:	N 43.136897	Altitude:	2181
	E 19.030571	Accuracy:	5
Personell:	TFB, SG, MTS	Draft:	Not detectable
Length:	3	Depth:	10

Directions to entrance
 Just W of summit of ridge in S side of Gornja Alisnica bowl. Jagged rift in area of bare rock.

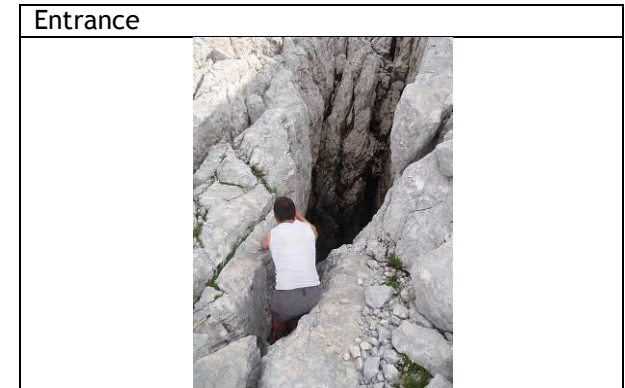
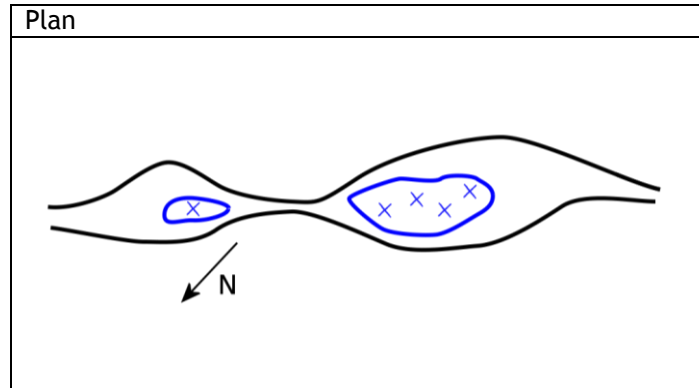
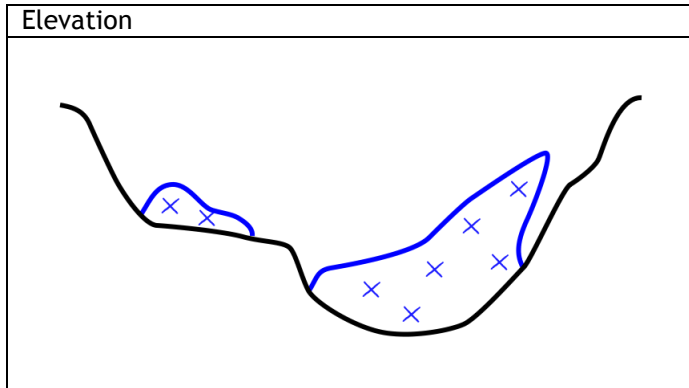
Way on/termination
 Appears to be a rubble floor sloping down to the N. Can't see quite how far rocks get. Likely to be choked, but no way of telling without rope.



GPS Reference:	YF31	Other Name:	-
Date:	18/08/2011	Marking:	YF31
Location:	N 43.136867	Altitude:	2175
	E 19.030013	Accuracy:	3
Personell:	TFB, SG, MTS	Draft:	Not detectable
Length:	15	Depth:	7

Directions to entrance
 On W side of ridge running down S side of Gornja Alisnica. Long rift running NS in area of bare rock. W of YF30

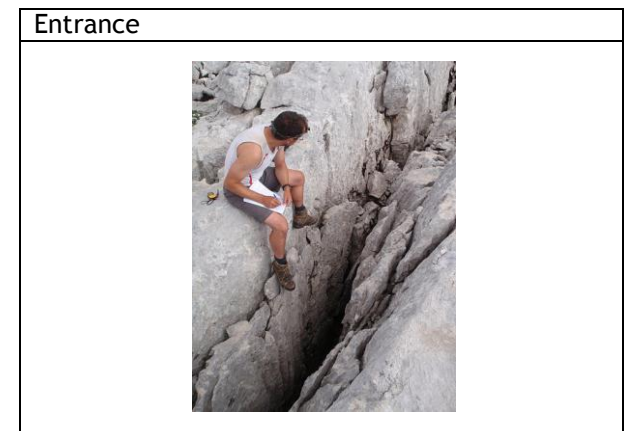
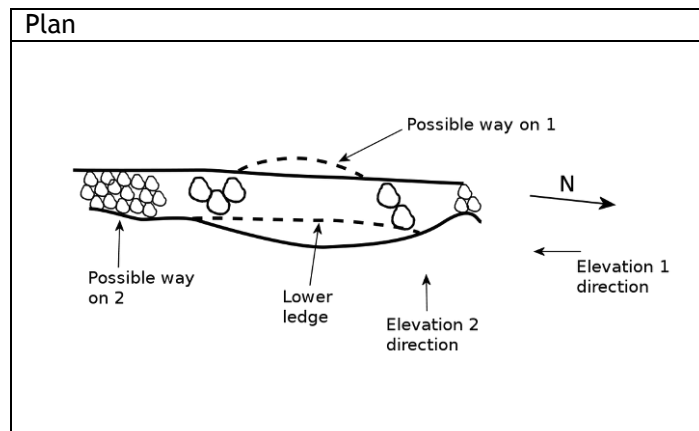
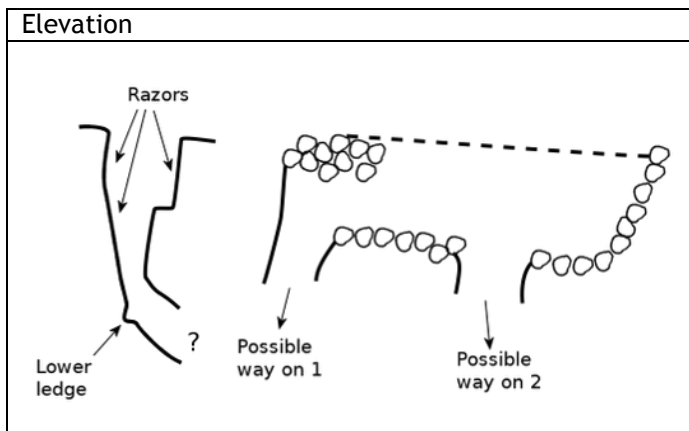
Way on/termination
 Snow plug on what appears to be a rubble floor. Needs rope for a proper look.



GPS Reference:	YF32	Other Name:	-
Date:	18/08/2011	Marking:	YF32
Location:	N 43.136753	Altitude:	2183
	E 19.030115	Accuracy:	3
Personell:	TFB, SG, MTS	Draft:	Not detectable
Length:	5	Depth:	12

Directions to entrance
 On W side of ridge running down S side of Gornja Alisnica. Long rift running NS in area of bare rock. W of YF30

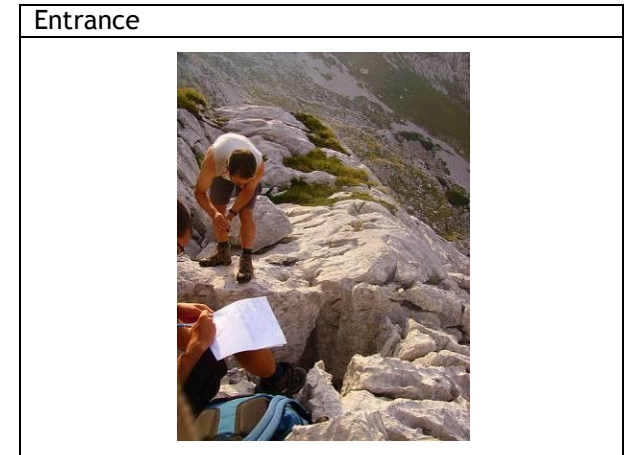
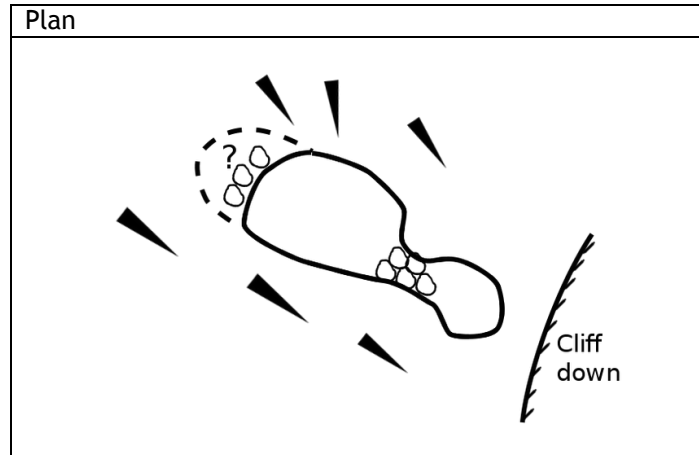
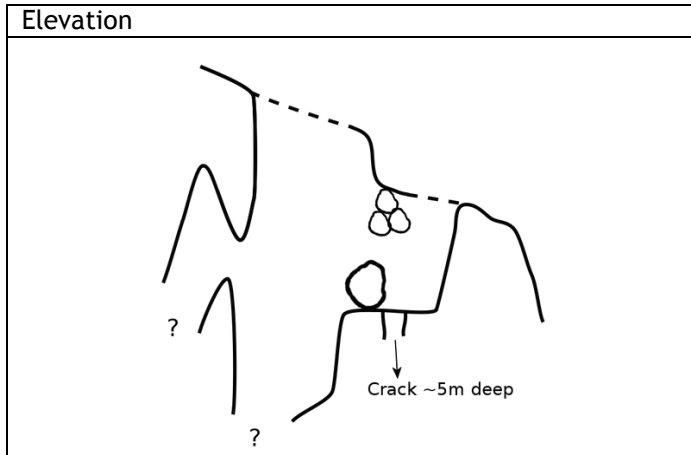
Way on/termination
 Way on 1 is tight where the cave wall curves out of sight. Stones catch a little below on stone (about 3m further than the ledge). Way on 2 is a tight rift through. Thrown stones rattle a bit, then thud.



GPS Reference:	YF33	Other Name:	-
Date:	18/08/2011	Marking:	YF33
Location:	N 43.13817	Altitude:	2145
	E 19.029638	Accuracy:	3
Personell:	TFB, SG, MTS	Draft:	Not detectable
Length:	0	Depth:	10

Directions to entrance
W side of ridge on S side of Gornja Alisnica. Open black hole in bare rock.

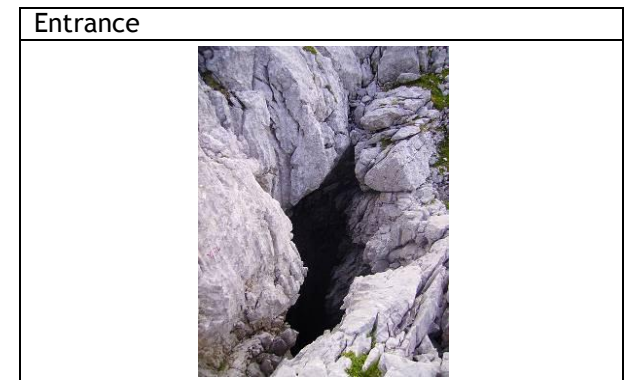
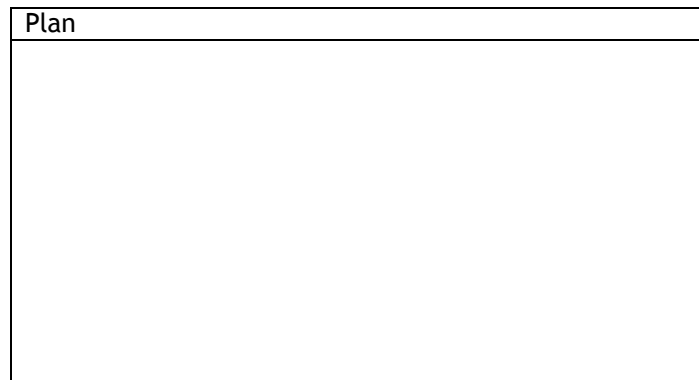
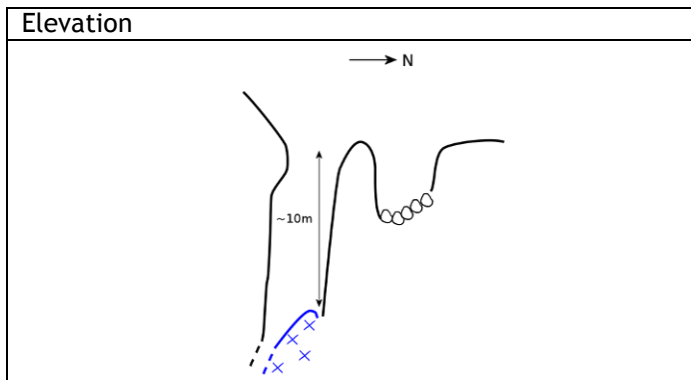
Way on/termination
Open hole >10m deep. Rocks hit floor at perhaps 12m ish, but bounce a bit further (4m?). Needs rope. May well be choked, but is more open than other rifts nearby. Possible other way on through window.



GPS Reference:	YF34	Other Name:	-
Date:	18/08/2011	Marking:	YF34
Location:	N 43.138566	Altitude:	2132
	E 19.029608	Accuracy:	3
Personell:	TFB, SG, MTS	Draft:	Not detectable
Length:	6	Depth:	10

Directions to entrance
Further down from YF33 but more on the ridge

Way on/termination
Snow at bottom. Can't see if there is a continuation without rope.



GPS Reference:	YF35	Other Name:	-
----------------	------	-------------	---

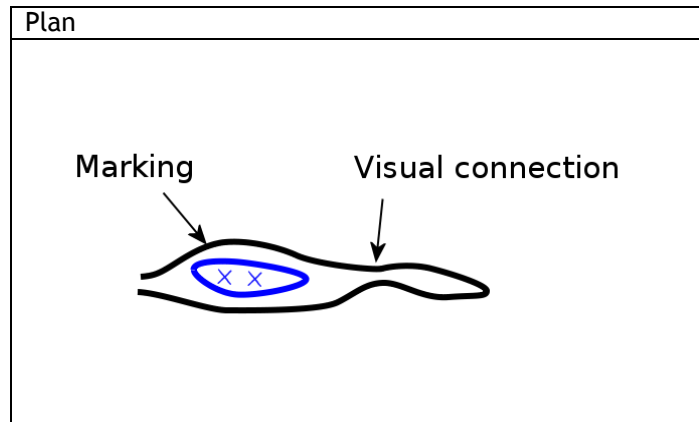
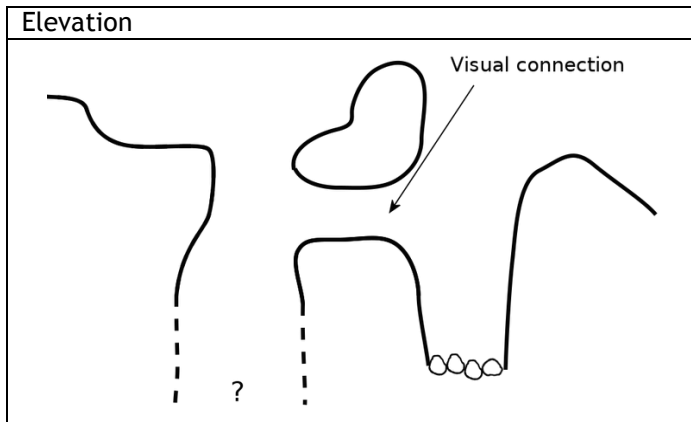
Directions to entrance

Way on/termination

Date:	18/08/2011	Marking:	YF35
Location:	N 43.138672	Altitude:	2140
	E 19.030015	Accuracy:	3
Personell:	TFB, SG, MTS	Draft:	Not detectable
Length:	4	Depth:	10

N of middle of spine in middle of Gornja Alisnica. Rift with snow at bottom.

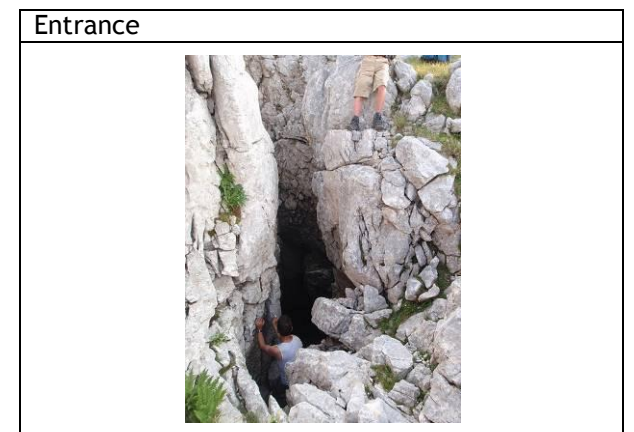
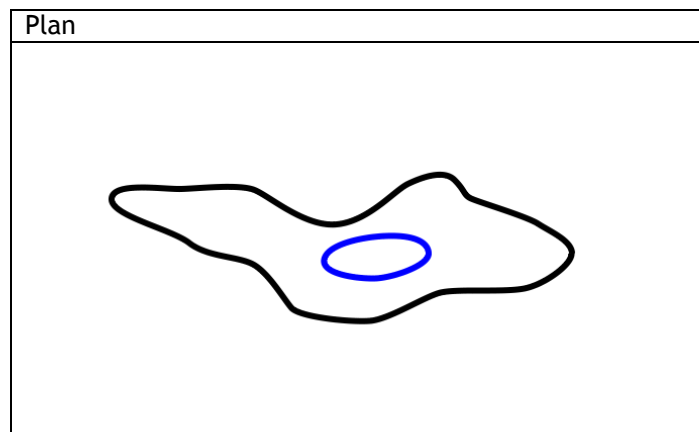
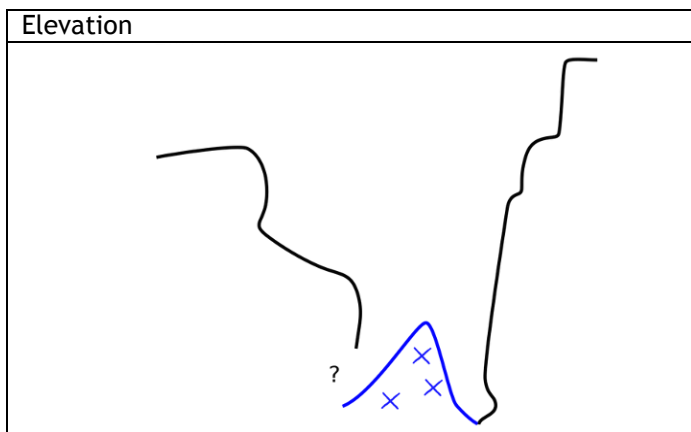
Can't be descended without rope. Rocks go quite far.



GPS Reference:	YF36	Other Name:	-
Date:	18/08/2011	Marking:	YF36
Location:	N 43.138805	Altitude:	2135
	E 19.030224	Accuracy:	4
Personell:	TFB, SG, MTS	Draft:	Not detectable
Length:	5	Depth:	10

Directions to entrance
Very close to the middle of Gornja Alisnica. N side below flat rock faces & scrub.

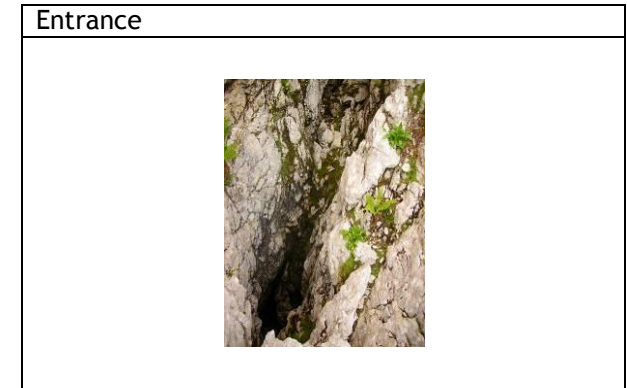
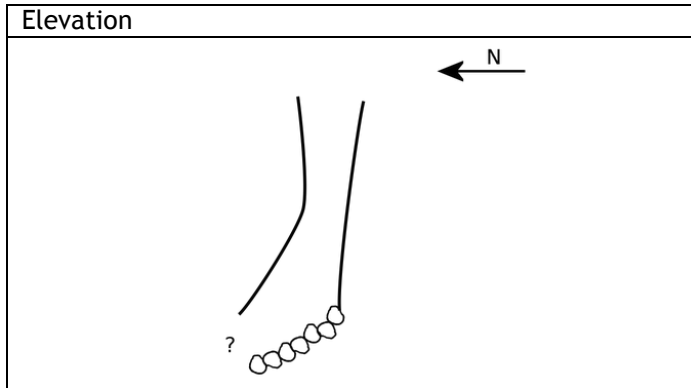
Way on/termination
Snow plug about 8-10m down. Rocks keep making noises beyond snow plug sometimes.



GPS Reference:	YF37	Other Name:	-
Date:	18/08/2011	Marking:	YF37
Location:	N 43.138975	Altitude:	2123
	E 19.029612	Accuracy:	4
Personell:	TFB, SG, MTS	Draft:	Not detectable
Length:	3	Depth:	6

Directions to entrance
 On W side of ridge on S side of Gornja Alisnica.

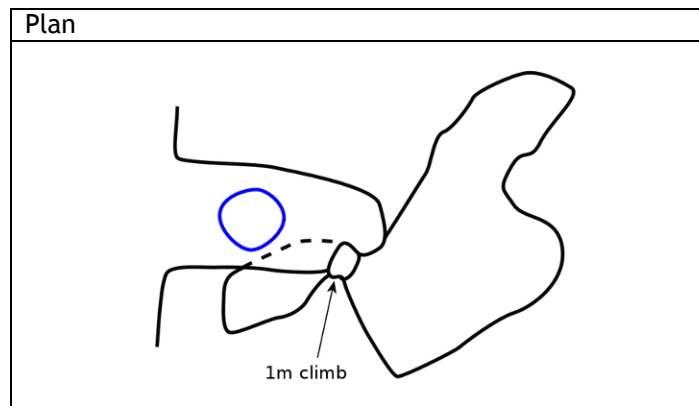
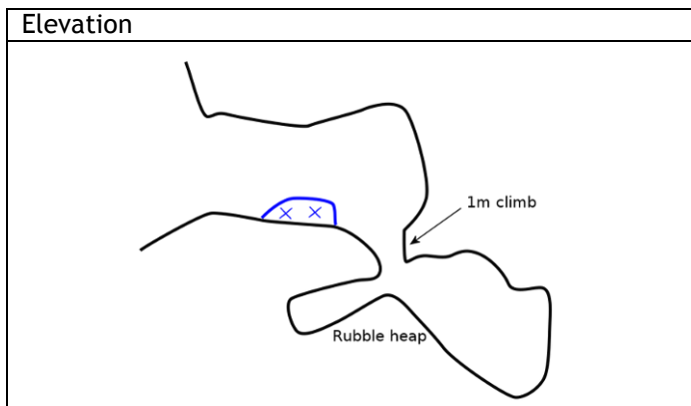
Way on/termination
 Rubble floor slopes away to the N.
 Probably chokes, but requires rope.



GPS Reference:	YF38	Other Name:	-
Date:	18/08/2011	Marking:	YF38 OX
Location:	N 43.139199	Altitude:	2104
	E 19.029678	Accuracy:	8
Personell:	TFB, SG, MTS	Draft:	Not detectable
Length:	20	Depth:	5

Directions to entrance
 On W side of ridge (near centre) running up the S side of Gornja Alisnica. BIG arch entrance

Way on/termination
 1m drop at back of entrance enters large (10m x 10m x 4m) chamber. No way on from chamber.



GPS Reference:	YF39	Other Name:	-
Date:	19/08/2011	Marking:	
Location:	N 49.150194	Altitude:	1818
	E 19.051108	Accuracy:	Poor
Personell:	TFB, SG, MTS	Draft:	Hoolie
Length:	25	Depth:	11

Directions to entrance
 Big mouth entrance on left cliff on the way up from the pasture above Zabljak. GPS was taken on path. Entrance is ~200m to the S.

Way on/termination
 Rift drops into water near start. Also a pit at the end. See survey

